

ASSEMBLY INSTRUCTIONS

GMC SAVANA CARGO- EXTENDED

This document presents the detailed procedures for assembling Legend Fleet components and accessories.

Customers can make use these step-by-step procedures and easily assemble without major difficulty.



LEGEND

FLEET SOLUTIONS

519 688 1043
customercare@legendfleet.com

56957 HWY 3 WEST,
TILLSONBURG,
ON N4G 4G8.

Table of Contents

Floor..... 3

Floor Sills 7

Wall Liners 9

Ceiling Liners..... 12

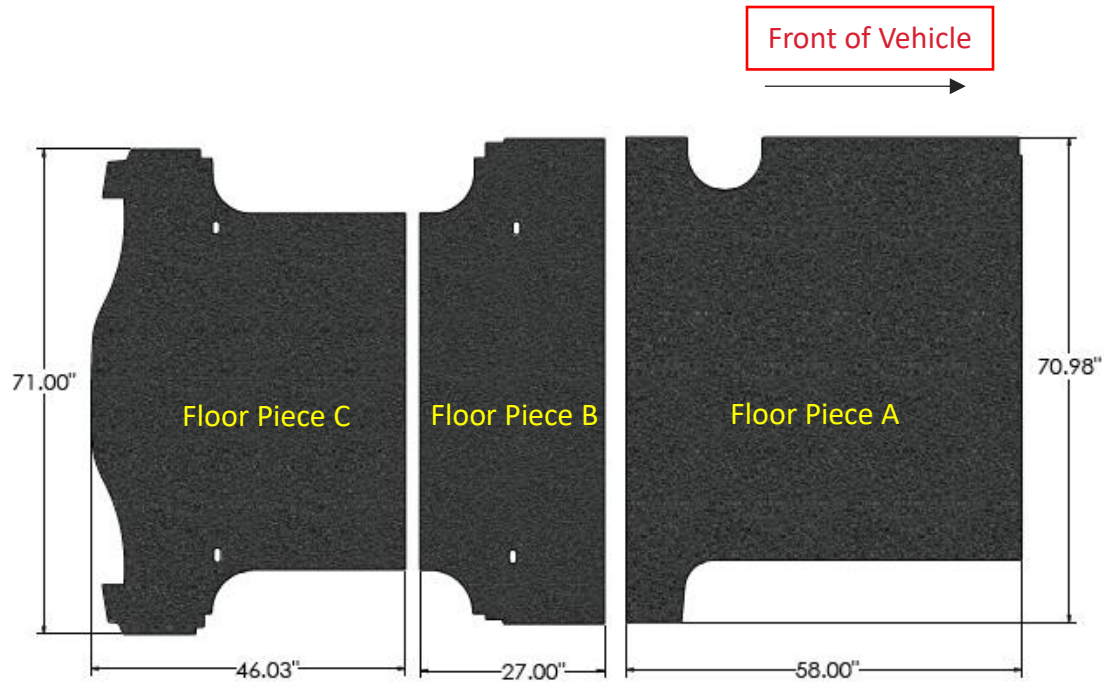
Top Sills..... 14

Door Liners - **Sliding Door** 16

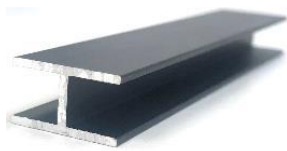
Door Liners - **Barn Door** 18

Floor

Parts and Hardware

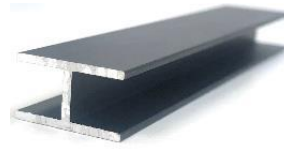


1 X



FRONT RAIL JOINT (71.00")

1 X



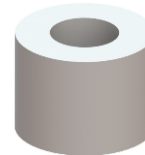
REAR RAIL JOINT (52.56")

1X



GLUE

4 X



SPACER

4 X



M10 BOLT

4 X



M10 FLAT WASHER

Assembly instructions

Remove the following items before floor installation:

1. OEM Plastic Trim
2. D-Rings
3. Tie-Downs
4. Other installed parts

Apply a thin line of glue in both the grooves of the Rail Joints, that is supplied with Legend's floor.

Step 1: Install Floor Piece A, as shown below.

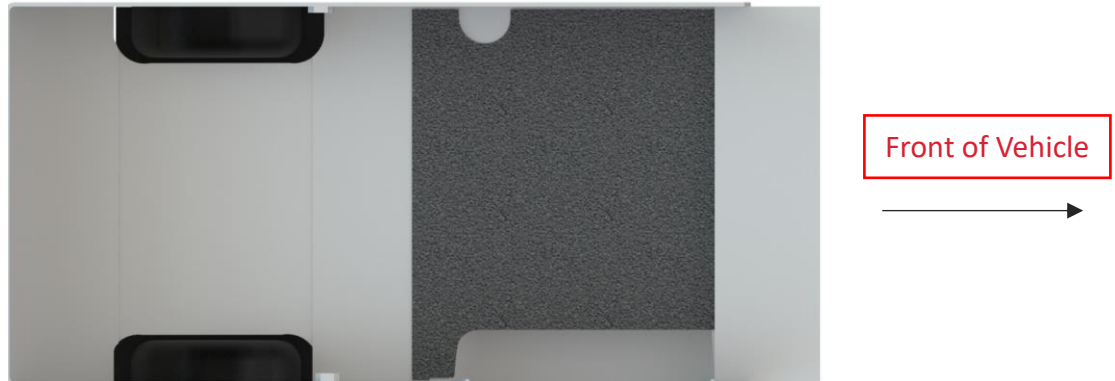
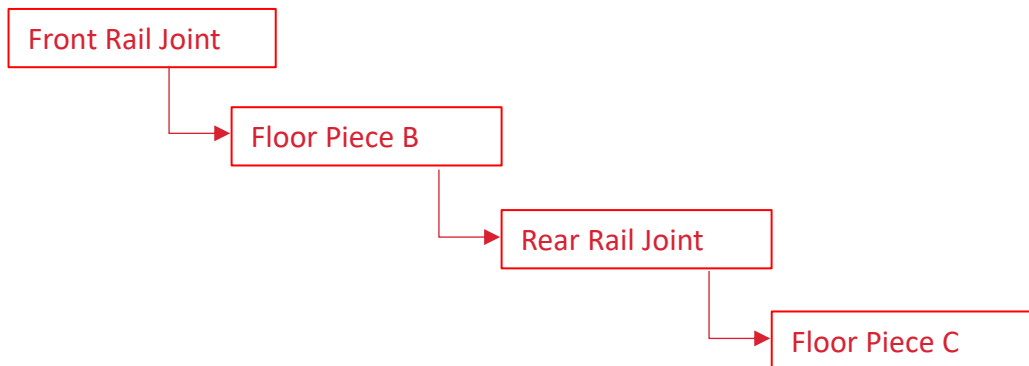


Figure 1

Step 2: Install the Parts in the following order after installing Floor Piece A as shown below.



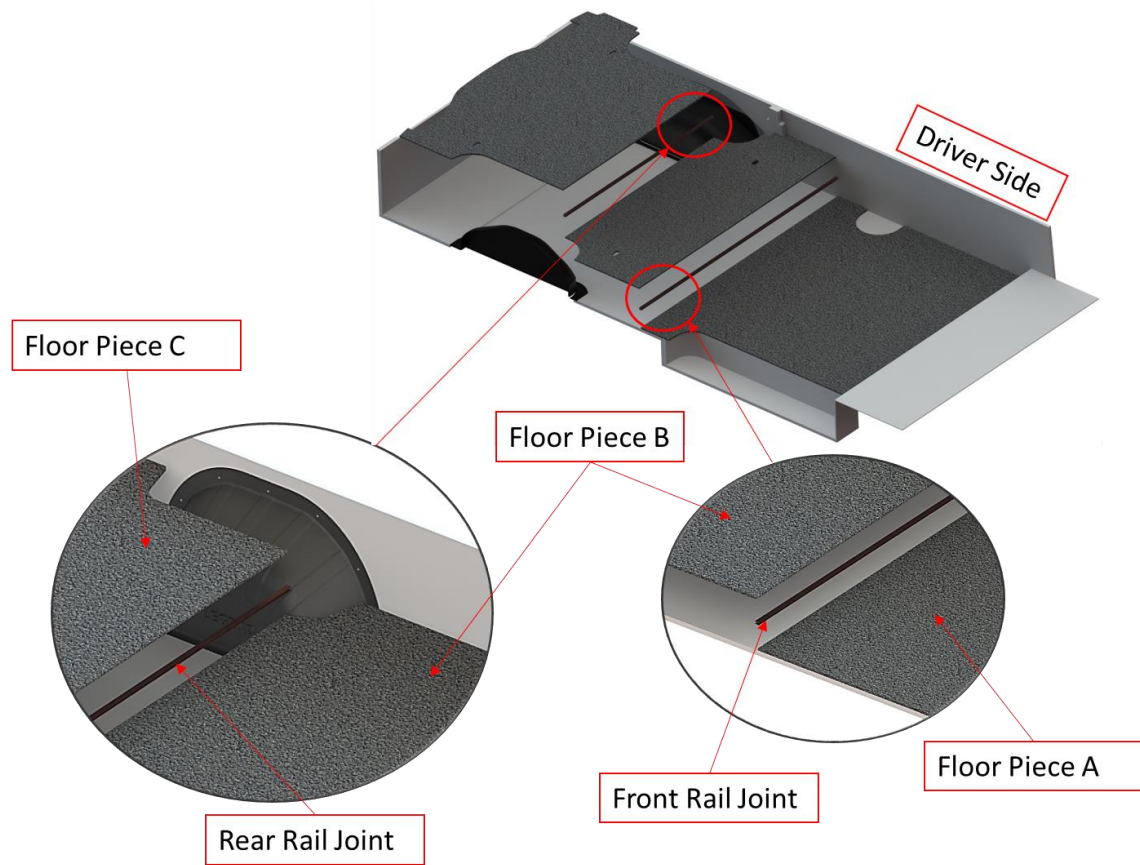


Figure 2

Step 3: Place the Spacers between the slots of the Floor as shown below.

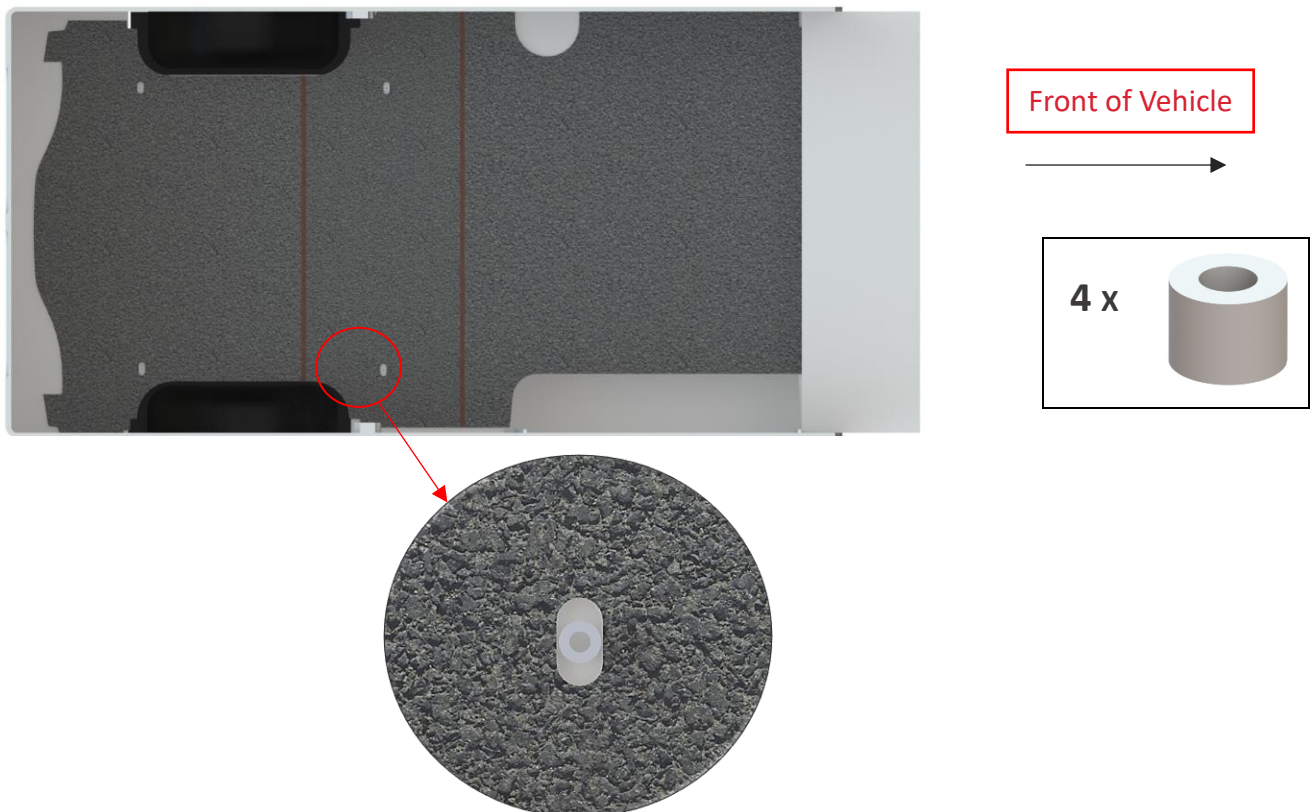


Figure 3

"Spacers between the slots of the Floor"

Step 4: Replace the OEM bolt in each D-Ring with combination of M10 Bolt and a flat washer as shown below.

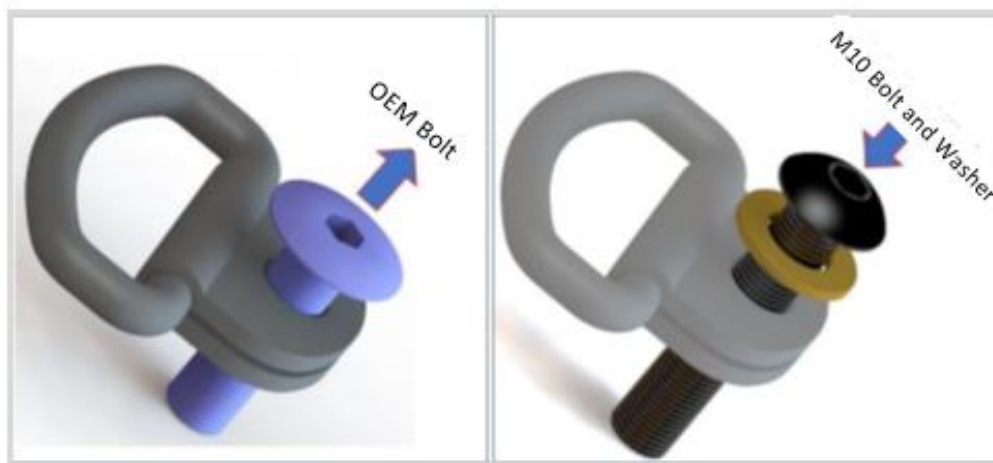


Figure 4

Step 5: complete the installation of Legend Floor.

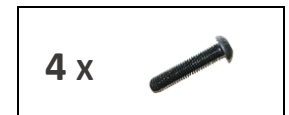
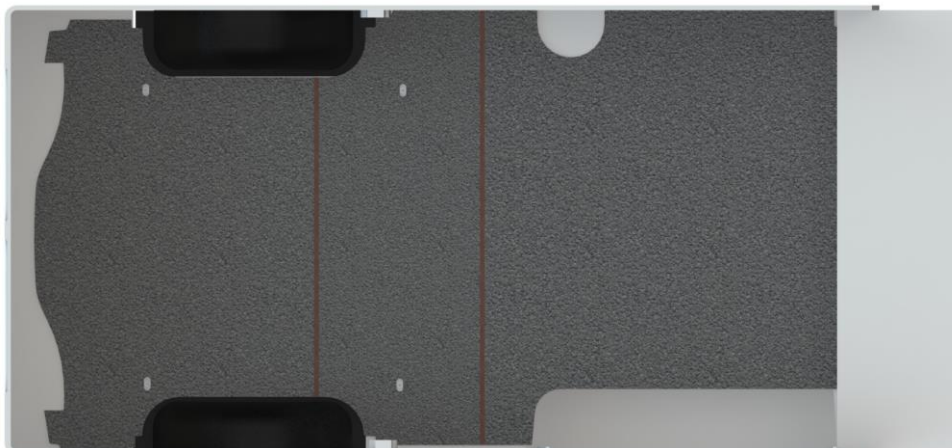


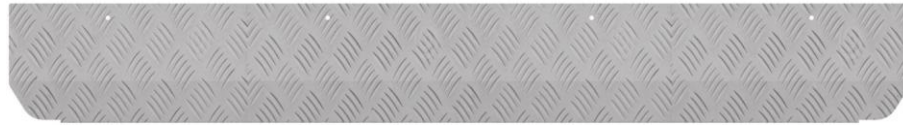
Figure 5

"Floor Installed" This view is from Inside of Van-Viewing from Top

Floor Sills

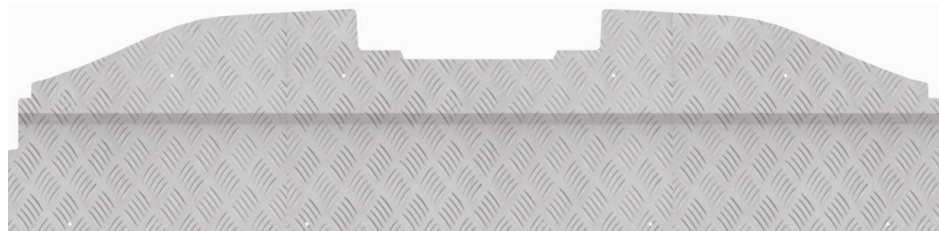
Parts and Hardware

1 X



SIDE SILL

1 X



REAR SILL

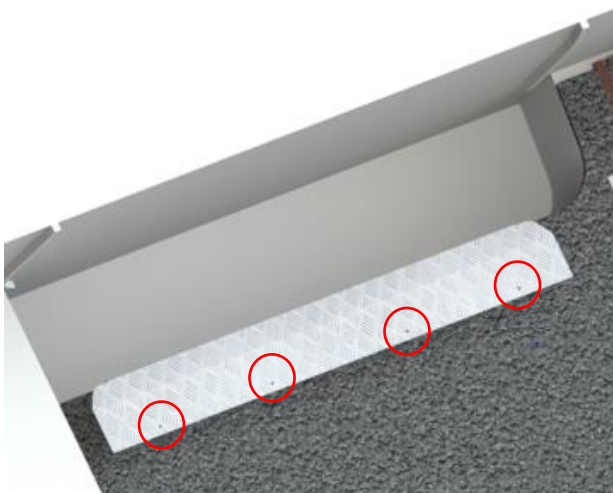
12 X



PAN-HEAD SCREW

Assembly Instructions

Step 1: Position the Side Sill on Legend's Floor. Place the Pan Head Screws (4 Nos) to the Floor as shown below



4 X



Figure 6
"Positioning and Fixing of the Side Sill"

Step 2: Position the Rear Sill on Legend's Floor.

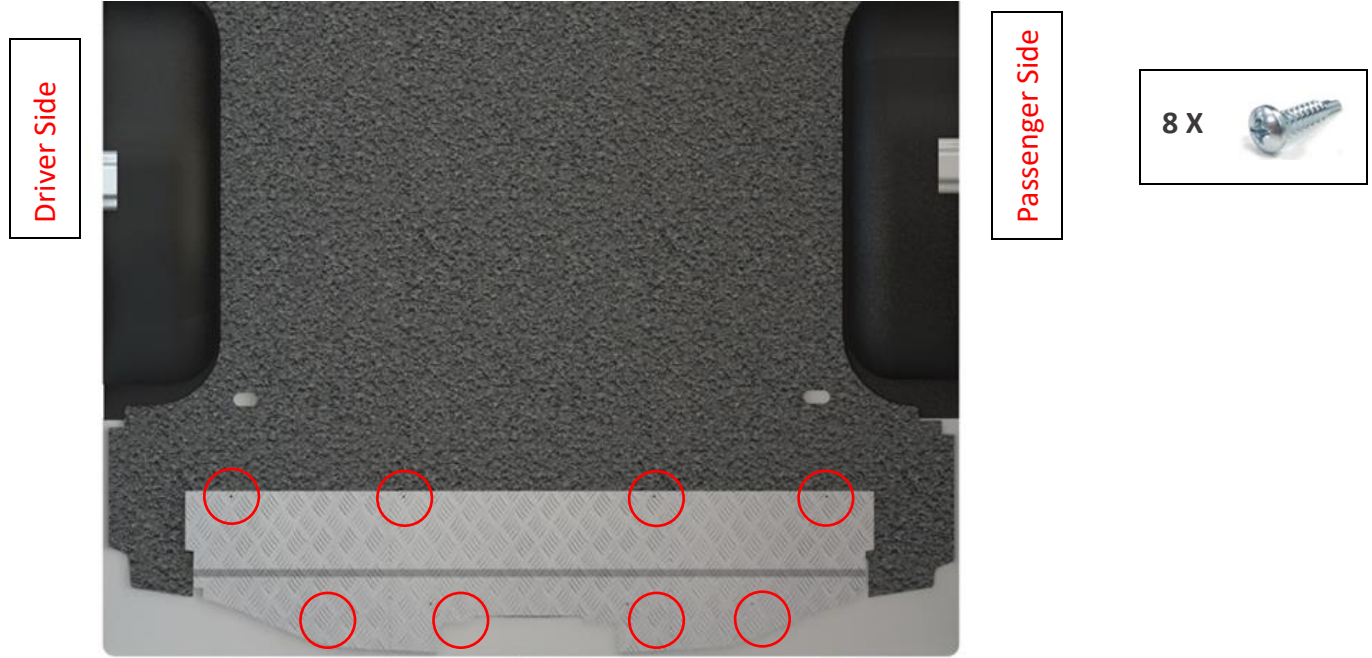
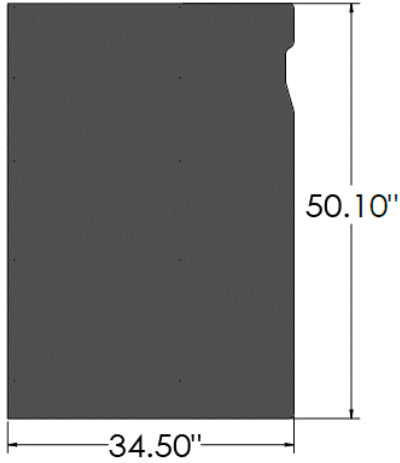


Figure 7

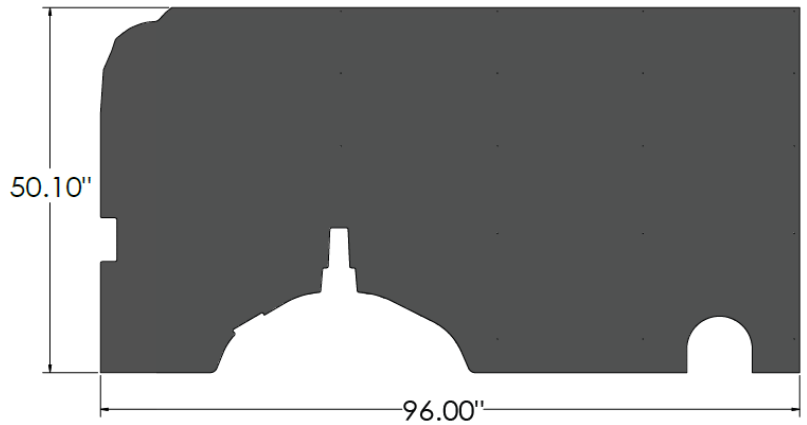
"Positioning and Fixing of the Rear Sill"

Wall Liners

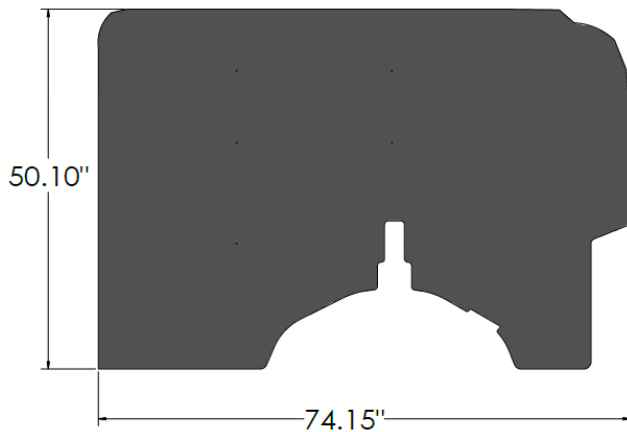
Parts and Hardware



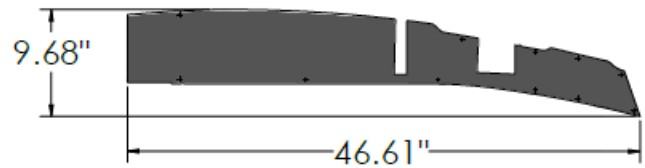
DRIVER SIDE FRONT WALL LINER (D1A)



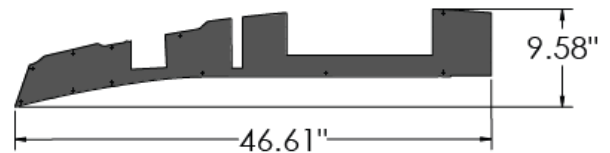
DRIVER SIDE REAR WALL LINER (D2A)



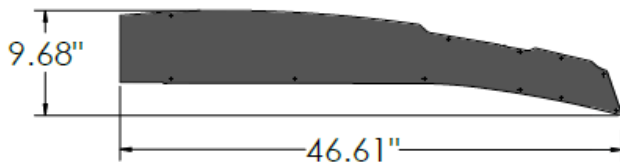
PASSENGER SIDE FRONT WALL LINER (P1A)



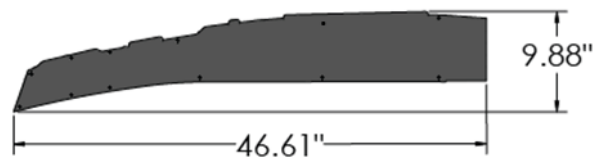
DRIVER SIDE FRONT WALL LINER (D3A1)



PASSENGER SIDE FRONT WALL LINER (P2A1)



DRIVER SIDE FRONT WALL LINER (D3A2)



PASSENGER SIDE FRONT WALL LINER (P2A2)

56 X



SCREW CAP

56 X



SELF-DRILLING SCREW

Assembly Instructions

Step 1: Bring the (D1A) Liner into the vehicle and align the holes on the panel with the ones present on the vehicle's body.

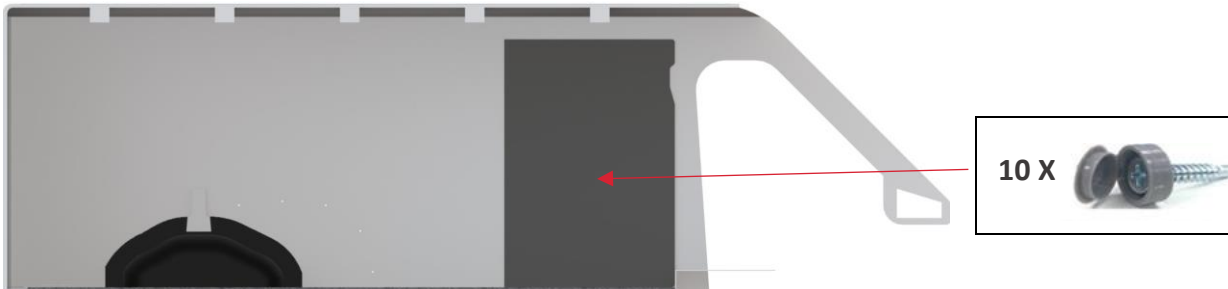


Figure 8

Step 2: Bring the (D2A) Liner into the vehicle and align the holes on the panel with the ones present on the vehicle's body.

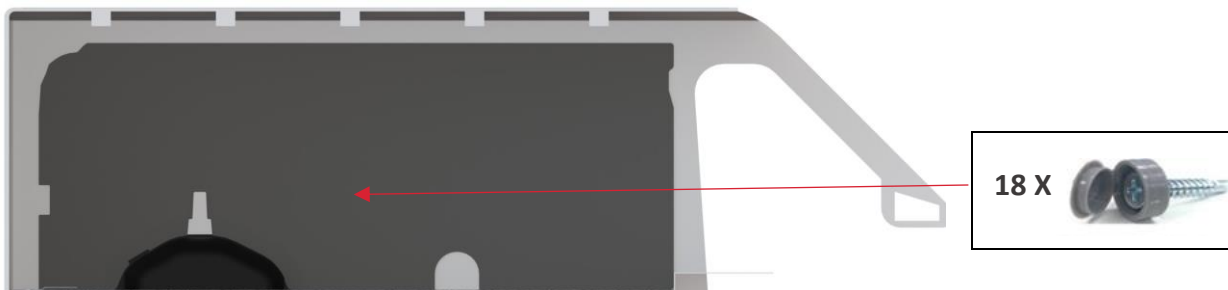


Figure 9

"Driver Side Front & Rear Wall Liner Installed" This is view from Inside of the Van- Viewing from Passenger Side

Step 3: Bring the (P1A) Liner into the vehicle and align the holes on the panel with the ones present on the vehicle's body.



Figure 10

"Passenger Side Front Wall Liner Installed" This is view from Inside of the Van- Viewing from Driver Side

Step 4: Bring the (P1A1/P2A2 & D3A1/D3A2) Liner into the vehicle and align the holes on the panel with the ones present on the vehicle's body.



Figure 11

"Driver & Passenger Side Rear Liners (D3A1 & P2A1) are Installed" This is view from Inside of the Van- Viewing from Front Side

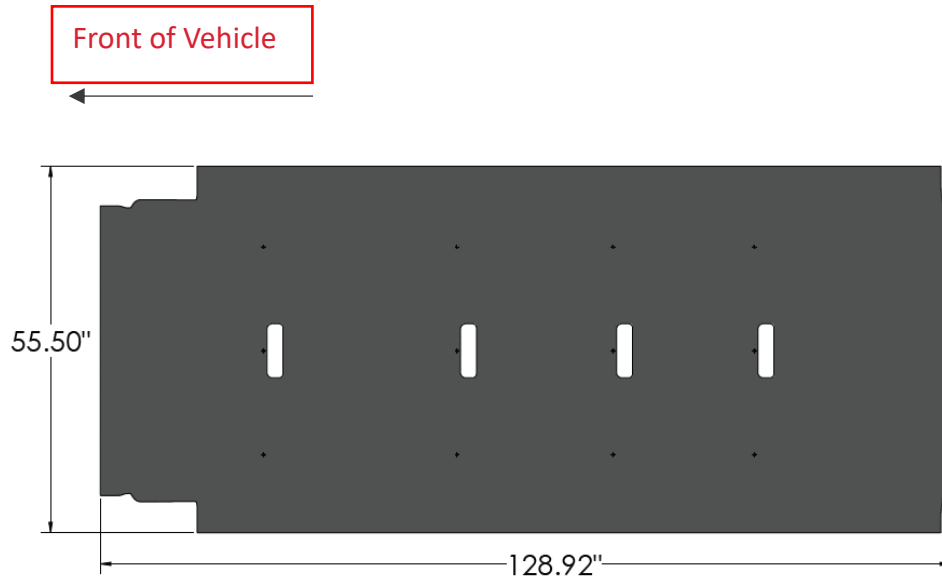


Figure 12

"Driver & Passenger Side Rear Liners (D3A2 & P2A2) are Installed" This is view from Inside of the Van- Viewing from Front Side

Ceiling Liners

Parts and Hardware



CEILING PIECES

12 X



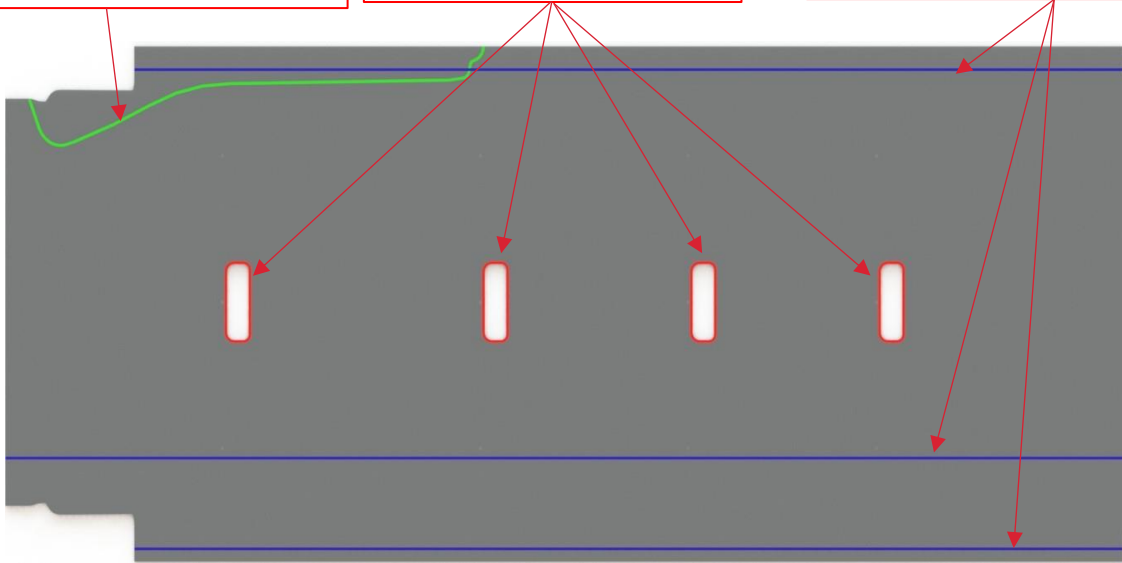
PUSH-IN RIVET

Assembly Instructions

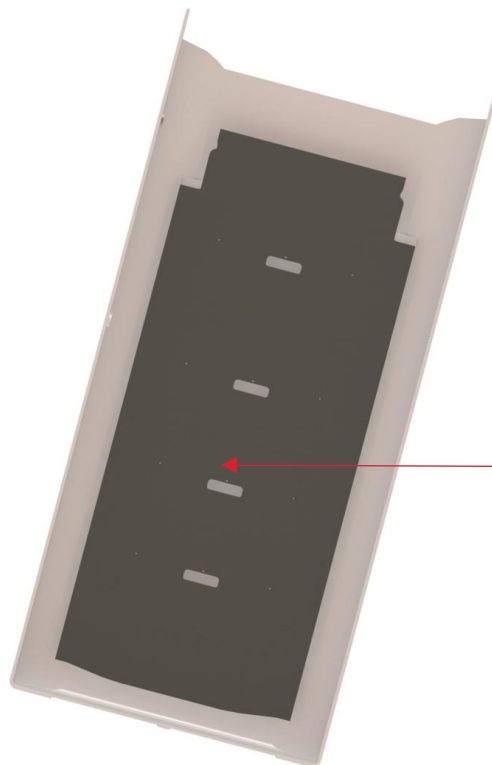
Cut along this score line (Shown in Green) if Foam Blocks are present behind headliner

Cut along this score line (Shown in Red) to fit around the OEM Lights

Bend the Panel along this score line (Shown in Blue) to allow the ceiling to arch along the cross



Step 1: Install Ceiling Piece, as shown below.



12 X



Figure 13

"Positioning and Fixing of the Ceiling Panel" This View is from Inside of the Van

Top Sills

Parts and Hardware



SILL B



SILL A



SILL C



SILL A1

DRIVER SIDE SILL

PASSENGER SIDE SILL

25 X

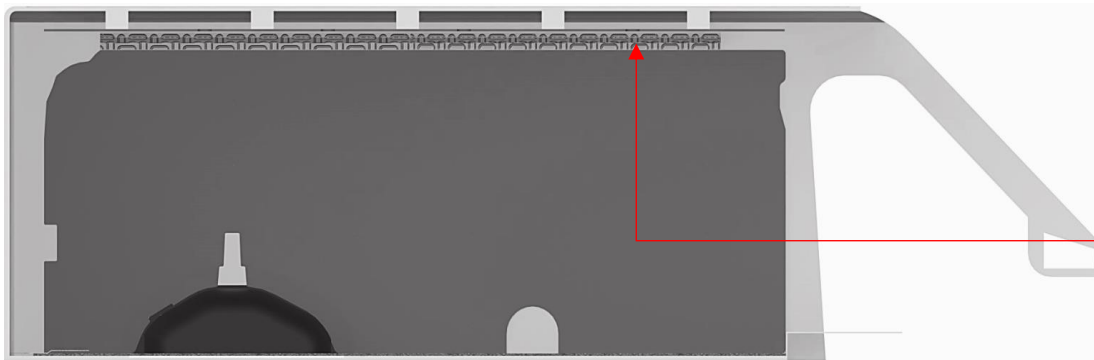


PAN-HEAD SCREW

Assembly Instructions

Assembly of the Top Sills is to be done outside of the Van before installing it in the Van.

Step 1: Fasten assembled sills in the Van.



13 X

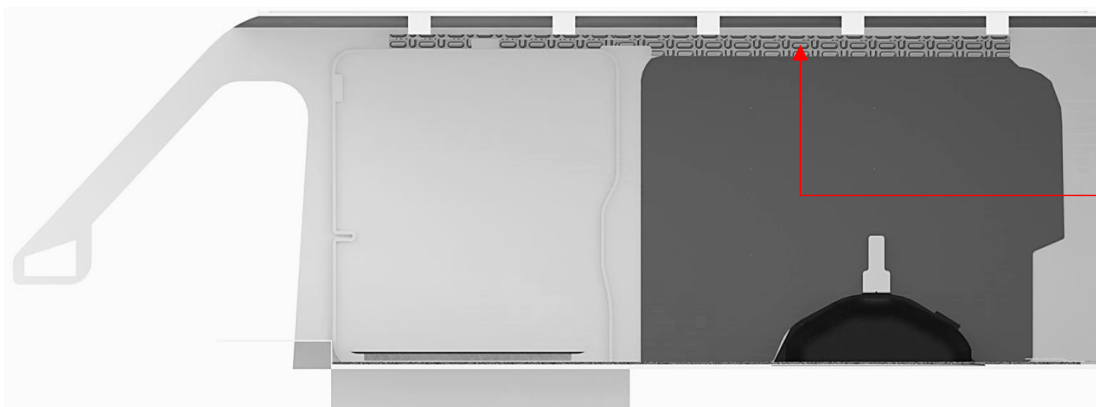


Figure 14

"Driver side Top Sills installed"

Step 2: Fasten assembled sills in the Van.

NOTE: Sill A1 is only used with the Side Barn Doors, not used with Sliding Door.



12 X



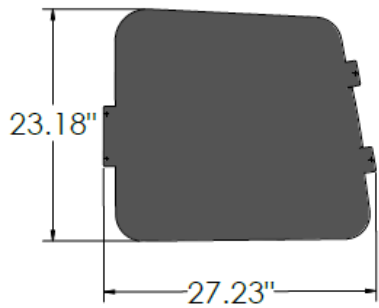
Figure 15

"Passenger side Top Sills installed"

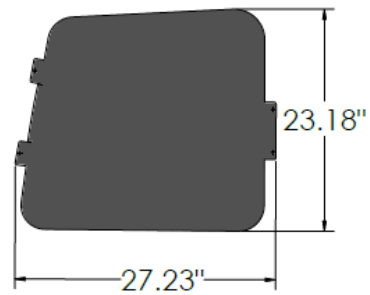
Step 3: Fasten assembled sills in the Van.

Door Liners - Sliding Door

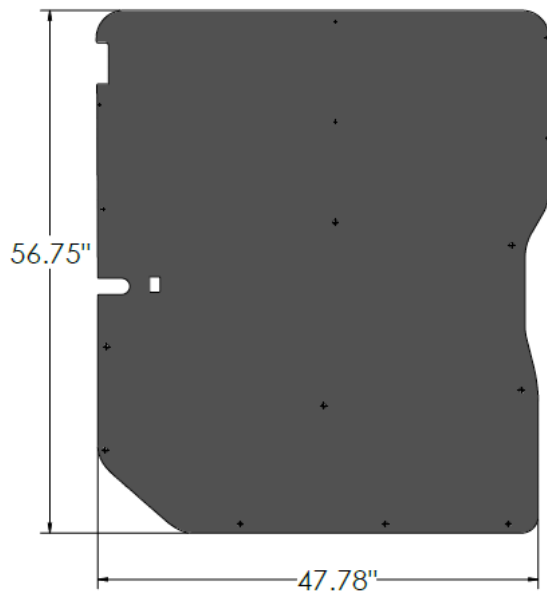
Parts and Hardware



DRIVER SIDE REAR DOOR LINER(DRA)



PASSENGER SIDE REAR DOOR LINER(PRA)



PASSENGER SIDE SLIDING DOOR LINER (PSA)

14 X



SCREWCAP

14 X



SELF-DRILLING SCREW


9 X




PUSH-IN RIVETS

Assembly Instructions

Van Doors MUST be in close Position When Installing Door Liners.

Hole Diameter (\varnothing) = 0.40"= 

Hole Diameter (\varnothing) = 0.20"= 

Step 1: Rear Door Assembly.

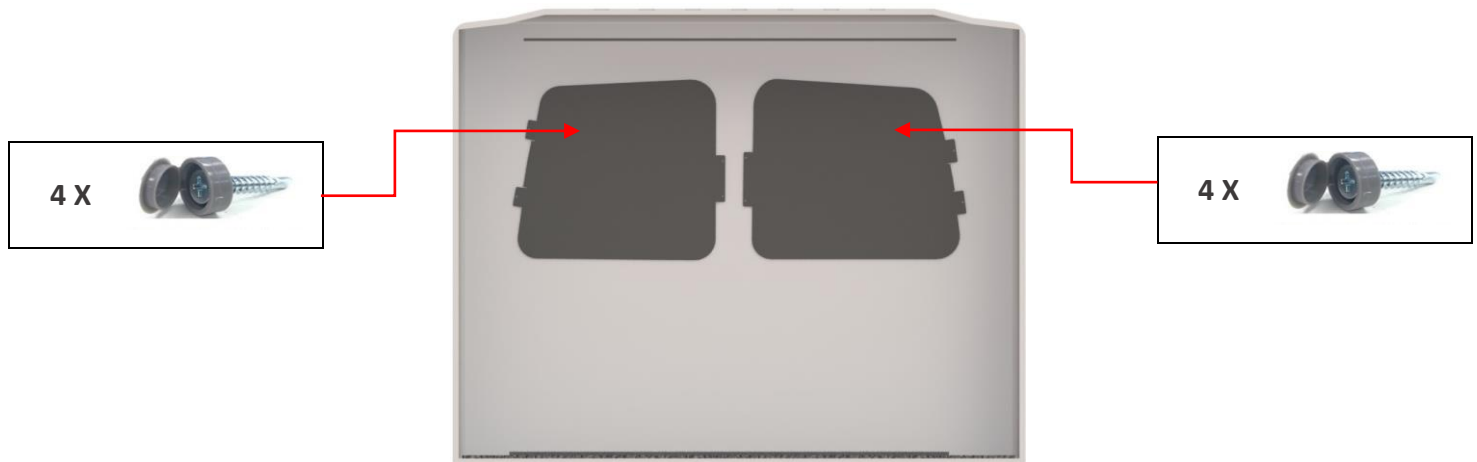


Figure 16
"Rear Door Liners Installed"

Step 2: Side Door Assembly.

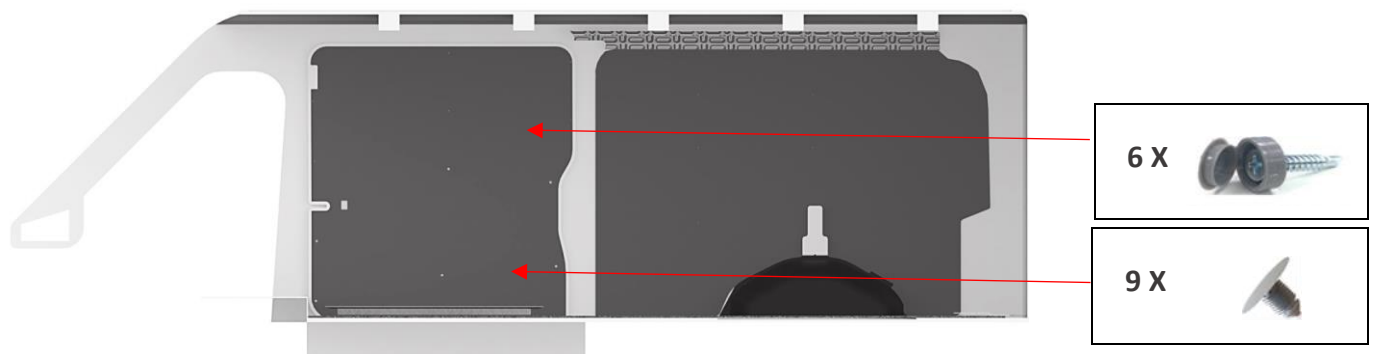
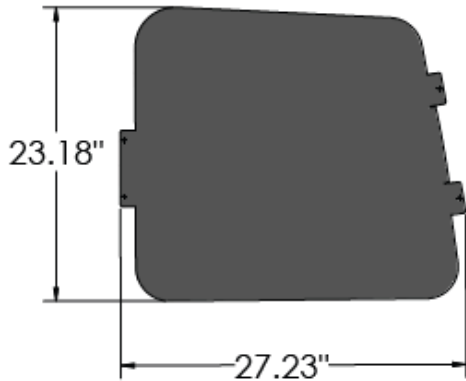


Figure 17
"Passenger Side Sliding Door Liner Installed"

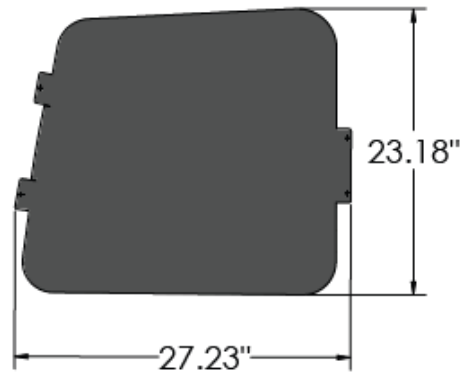
Step 3: Installation of your Legend Door Liners is now complete.

Door Liners - Barn Door

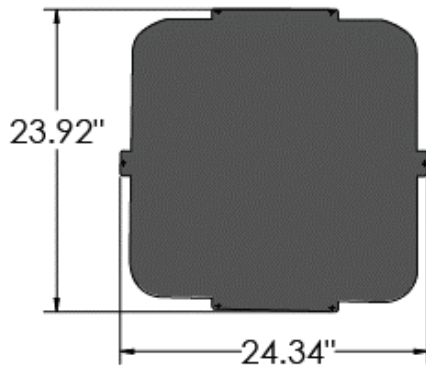
Parts and Hardware



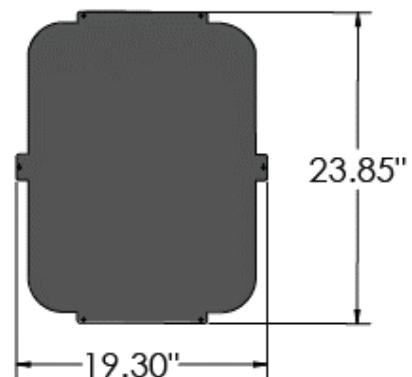
DRIVER SIDE REAR DOOR LINER(DRA)



PASSENGER SIDE REAR DOOR LINER(PRA)



PASSENGER SIDE BARN DOOR LINER FRONT



PASSENGER SIDE BARN DOOR LINER REAR

38 X



SCREWCAP

38 X



SELF-DRILLING SCREW

Assembly Instructions

Van Doors MUST be in close Position When Installing Door Liners.

Step 1: Rear Door Assembly.

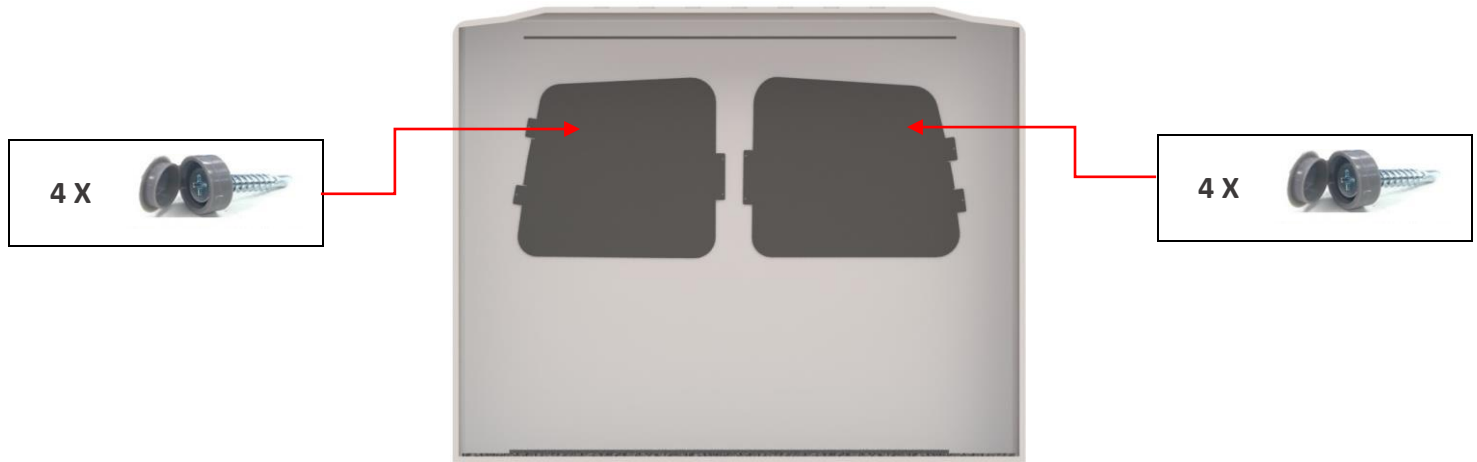


Figure 18
"Rear Door Liners Installed"

Step 2: Side Door Assembly.

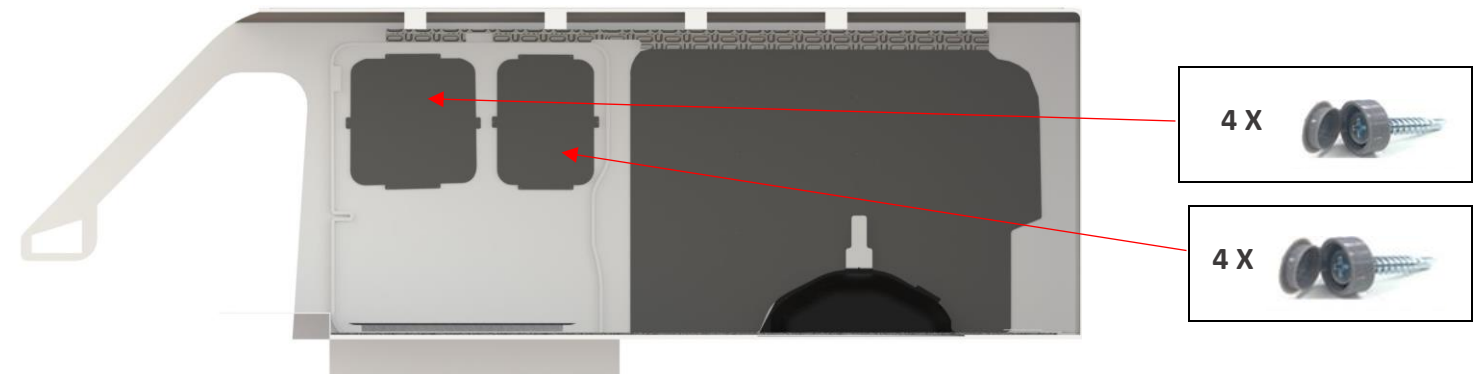


Figure 19
"Passenger Side Barn Door Liner Installed"

Step 3: Installation of your Legend Door Liners is now complete.