

TITLE: FOLDING SHELF MODULE ASSEMBLY IN SPRINTER		
DOCUMENT #: WI-FOLD MODULE SPRNTR	LABOR HOURS: 1.0	PRINT DATE: 7/23/24
REVISION: 1	PREPARED BY: A. SUPPANAVAR	DATE PREPARED: 7/16/24
EFFECTIVE DATE: 7/17/2024	REVIEWED BY: SK	DATE REVIEWED: 7/17/24
FUNCTIONAL DEPARTMENT: ENGINEERING	APPROVED BY: SK	DATE APPROVED: 7/17/24

STANDARD WARNINGS:

- READ WORK INSTRUCTIONS IN ENTIRETY BEFORE STARTING
- CHECK THAT YOU ARE PROPERLY CLEAR OF GAS TANK AND WIRES BEFORE DRILLING
- CONTACT ENGINEERING IF QUESTIONS ARISE OR DOCUMENT NEEDS TO BE UPDATED
- FOLLOW ALL LISTED OEM SYSTEM FUNCTIONALITY CHECKS AFTER INSTALL.

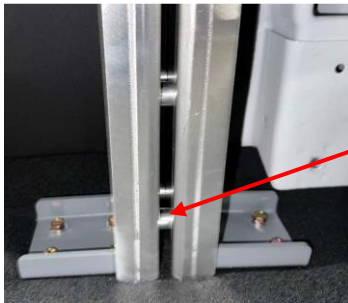
LMS COMPATIBILITY TABLE

VAN / LMS SIZE	3FT	4FT	5FT	6FT	3FT+ 5FT	3FT+ 4FT	4FT+ 4FT	5FT+ 4FT	5FT+ 5FT	6FT+ 3FT	5FT+5FT +3FT	6FT+ 6FT
Mercedes Sprinter												
STD Roof - 144WB	Street	Street &Curb	Street &Curb	Street	Street		Street	Street		Street		
High Roof - 170 - EXT	Street &Curb	Street &Curb	Street &Curb	Street &Curb	Street &Curb	Curb	Street	Street	Street	Curb	Street	Street

Note: The above combinations may vary depending on updates to the VAN Model

IMPORTANT NOTES:

- MODULE ASSEMBLY sequence in the Vehicle starts from the street side, near to partition.
- Before installation, measure the dimensions of the module and the wheel well area to ensure compatibility and clearance.
- SPACERS should be used for upright-to-upright mountings, if required. *



ALUM SPACER WITH
SCREW HHC 5/16-18X1-3/4

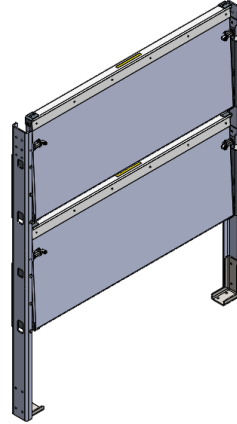
***If the gap between two uprights are more than 2 Inch “no spacer is required”.**

VEHICLE INSTALL:

- Place the **MODULE ASSEMBLY** in the vehicle cargo area for Installation.



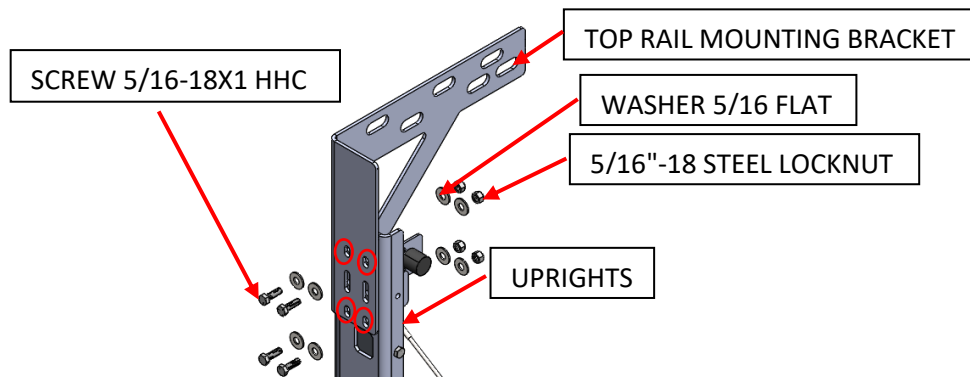
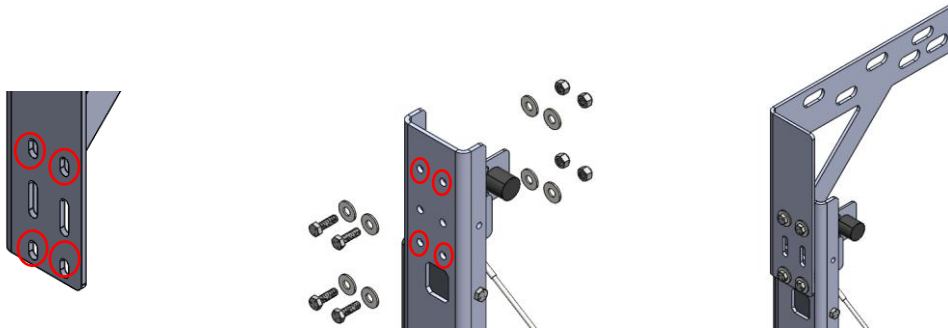
OPEN CONDITION



CLOSED CONDITION

- Attach (1) TOP RAIL MOUNTING BRACKET LH, (1) TOP RAIL MOUNTING BRACKET RH placing one at left upright and the other at right upright, using (16) WASHER USS 5/16 FLAT ZINC, (8) SCREW 5/16-18X1 HHC 304S & (8) 5/16"-18 STEEL LOCKNUT for secure installation.

NOTE: Do not fully tighten the nut & bolt

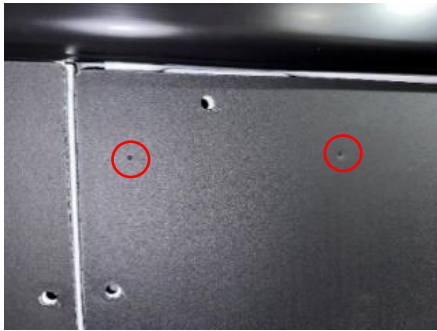


- Use floor template to mark and drill, or Position the module assembly in the van and mark the hole position and drill (8) mounting holes on the floor. Utilize a 1-1/8" holesaw with a pilot bit, Subsequently, redrill the pilot holes using a 3/8" unibit, (4) drill holes near the partition at the Driver Side and (4) holes near the Driver Side C pillar.

Use Rustproofing on all drilled floor holes.

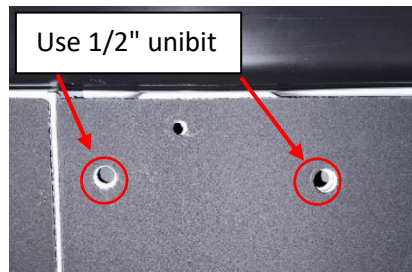
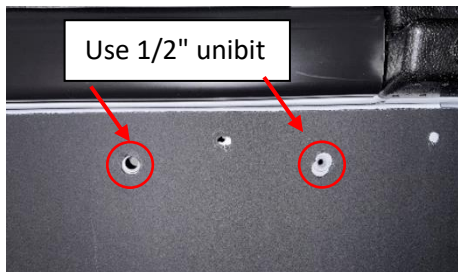


- Pop off the tree clips at top of the wall liner and store them for re-use.
- Attach the hole template to the wall and mark the holes or use the whole **MODULE ASSEMBLY** to mark and drill.

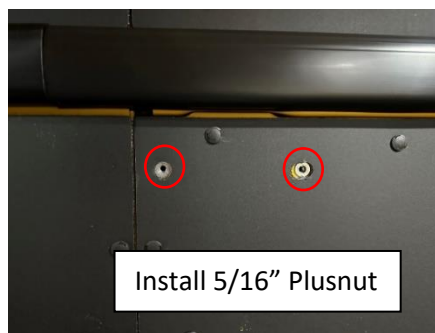
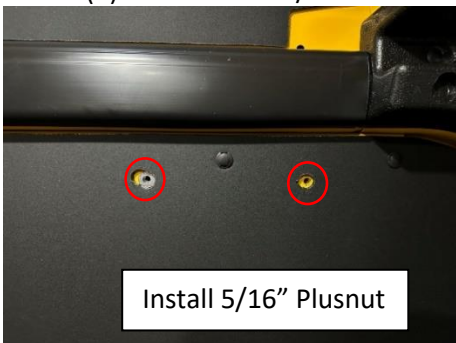


Holes marked for drilling

- Use 3/4" holesaw to drill (4) holes in the wall liner. (2) holes are located near the partition and the other (2) holes are located near the C pillar, drill into the vehicle wall using 1/2" unibit.

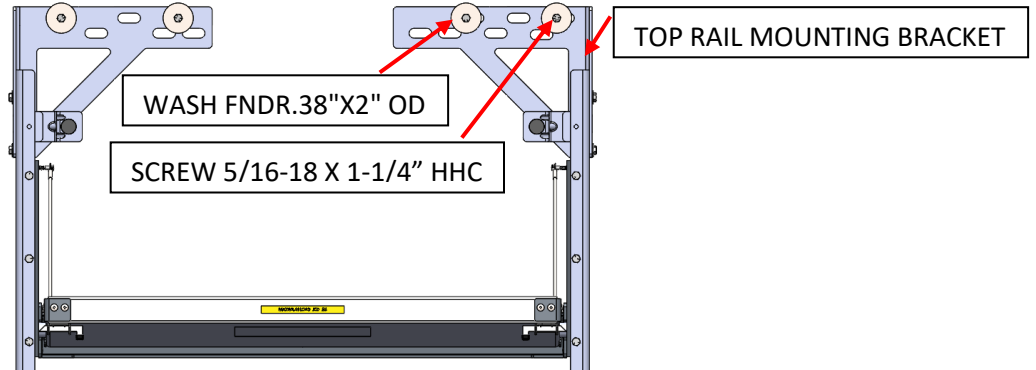


- Install (4) PLUSNUT FH 5/16-18 threaded insert into the previously drilled (4) 1/2" holes.

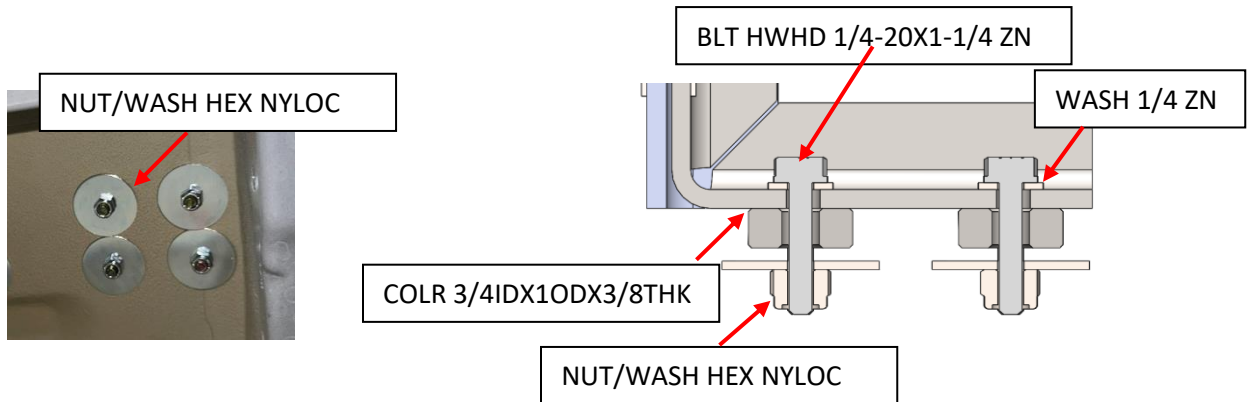


- Place the MODULE ASSEMBLY inside the vehicle cargo area and align it to the **TOP MOUNTING HOLES** and the **FLOOR HOLES**.
- Attach (1) MODULE ASSEMBLY to the Plusnut on the wall side Using (4) SCREW 5/16-18 X 1-1/4" HHC GR8, (4) WASH FNR.38"X2" OD ZINC

***TOP RAIL MOUNT BRK TOP SLOTS ARE USED FOR SPRINTER VANS*.**




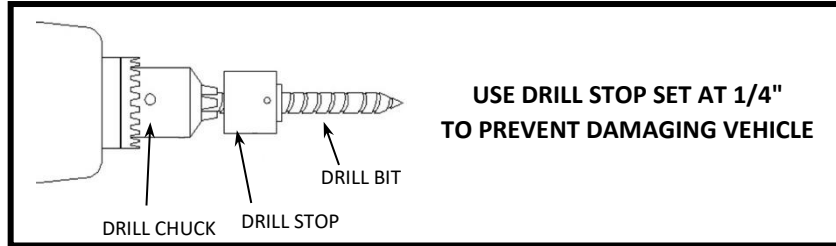
- Attach (1) MODULE ASSEMBLY to the floor, Use (8) BLT HWHD 1/4-20X1-1/4 ZN YL GR, (8) WASH 1/4 ZN GR2, (8) NUT/WASH HEX NYLOC 1/4-20 ZN



- The module is installed in the vehicle.


BEFORE DRILLING

**CHECK ALL MOUNTING LOCATIONS TO PREVENT PENETRATING
GAS LINES, GAS TANKS, BRAKE LINES, WIRING OR ANY OTHER STRUCTURE OF VEHICLE**



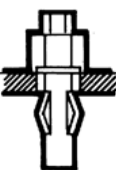
The Plusnut® is pre-bulbed for easy installation

1




The Plusnut® is pre-assembled with hex cap and hex bolt.
Then it is inserted into a pre-drilled hole

2




As the bolt is tightened, the Plusnut® upsets
and provides outstanding
blind fastening holding power

3



C-500 tool tightens bolt thru hex head cap into Plusnut® A
ratchet, open-end or closed –end wrench can be used.

4



Fully upset Plusnut® provides
a reliable nut plate for fastening.

5