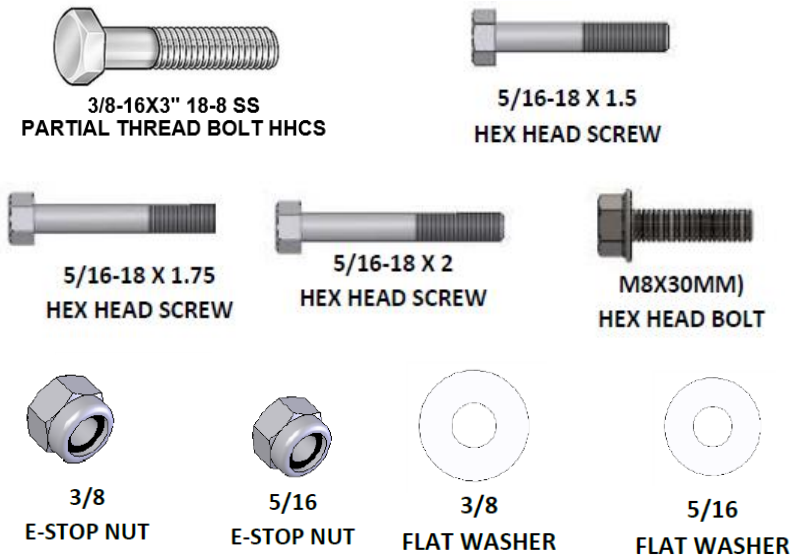


## Recommended Tools

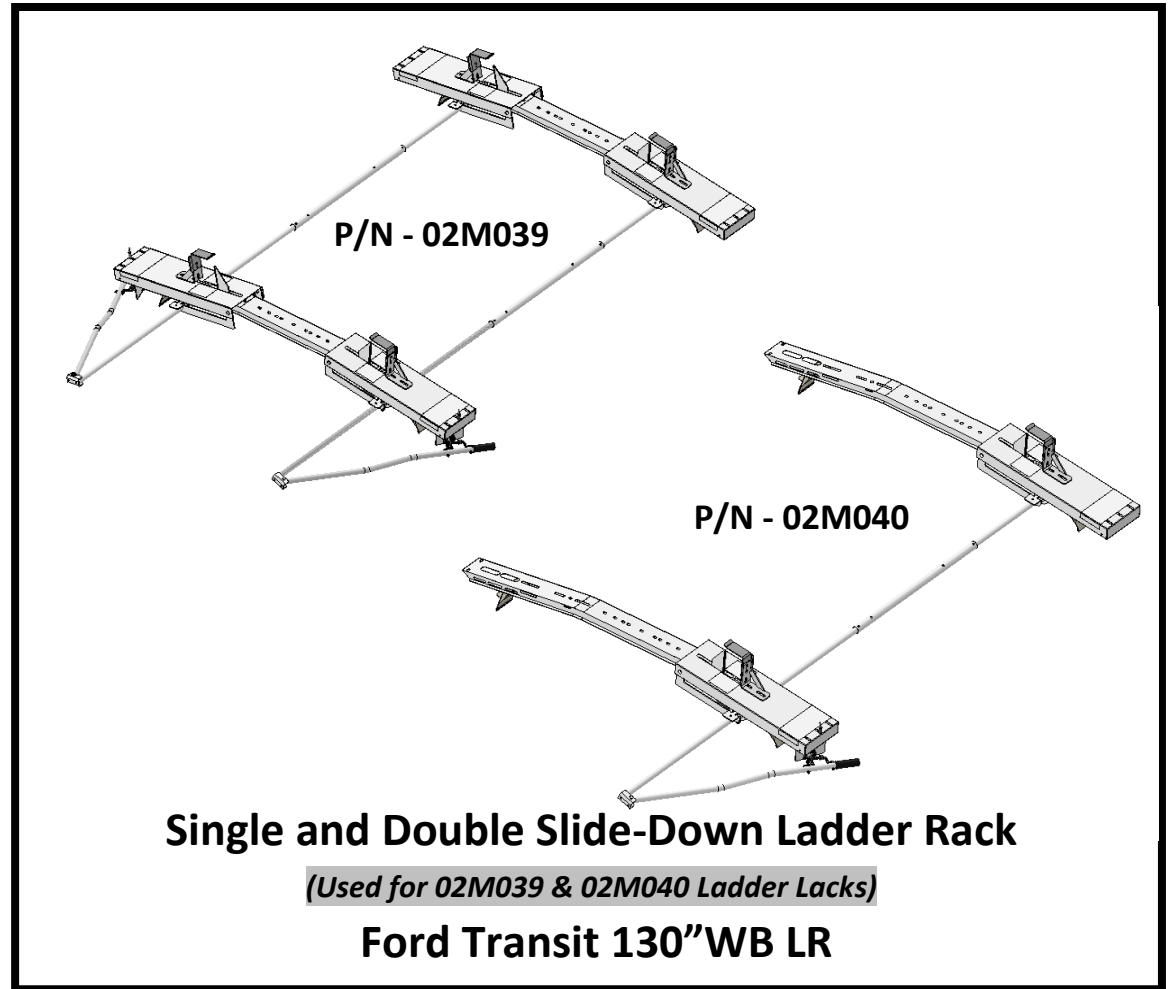


## Hardware

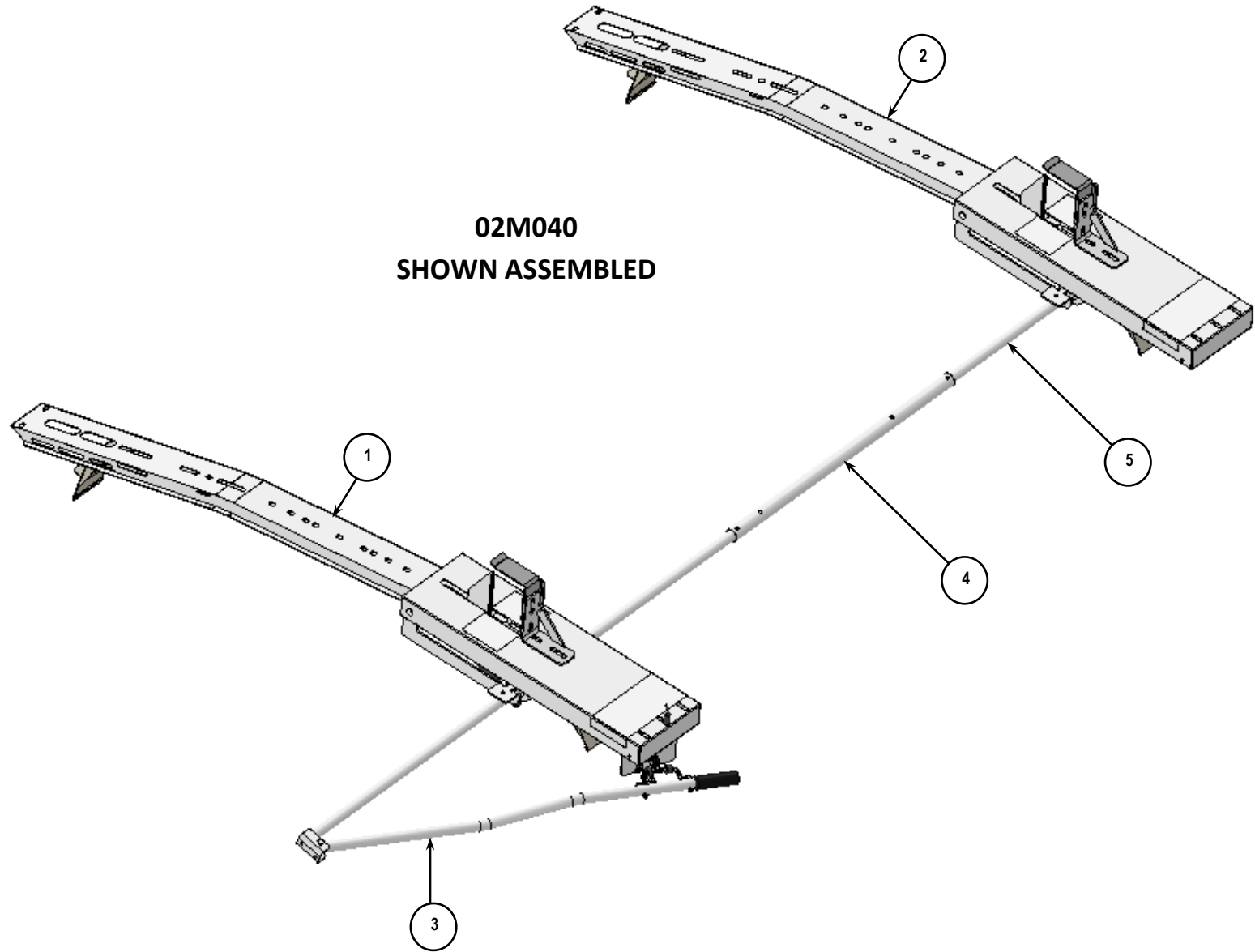


CAPLUG  
P/N RM560240

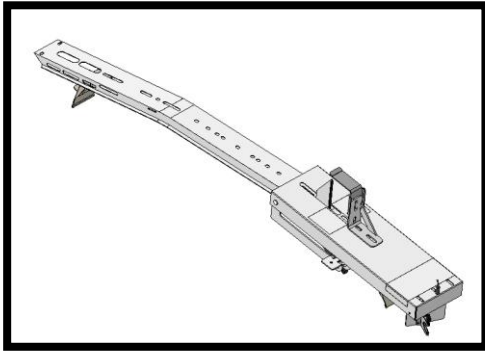
**\*\*\* TO BE INSTALLED IN FORWARD END OF FRONT TUBE**



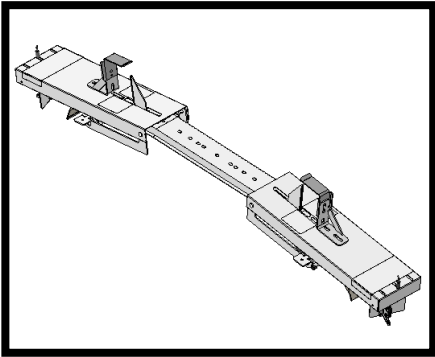
**Review this document to ensure that all parts and hardware are included in the package, before installation.**  
**In the event that parts are missing please contact Masterack @ 1-800-222-8785, to re-order missing parts.**



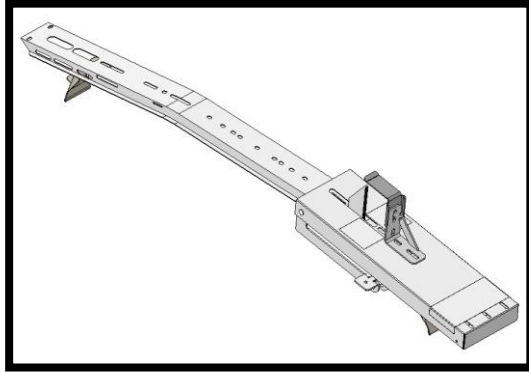
**COMPONENTS**



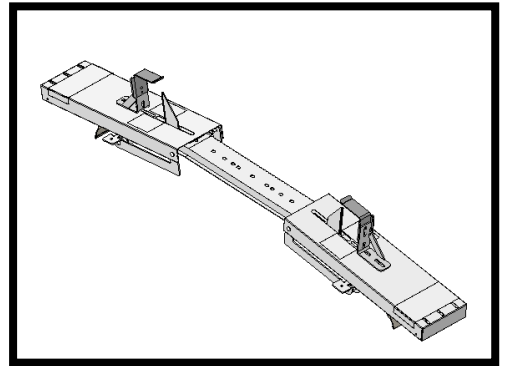
**1** REAR CROSSBOW ASSEMBLY  
P/N -M847040  
APPLICABLE TO 02M040



**1** REAR CROSSBOW ASSEMBLY  
P/N -M847139  
APPLICABLE TO 02M039



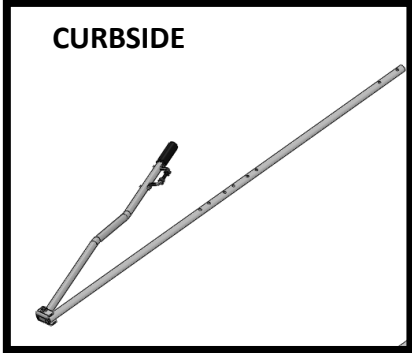
**2** FRONT CROSSBOW ASSEMBLY  
P/N -M847140  
APPLICABLE TO 02M040



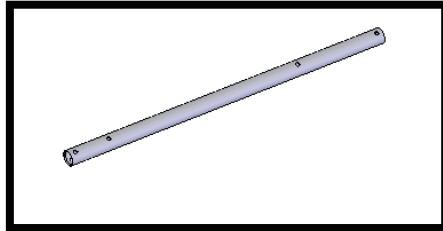
**2** FRONT CROSSBOW ASSEMBLY  
P/N -M847039  
APPLICABLE TO 02M039



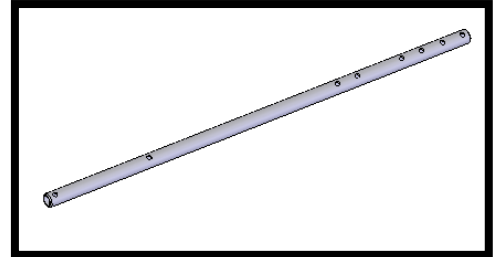
**3** REAR TUBE / HANDLE ASSEMBLY  
P/N -M847835  
APPLICABLE TO 02M039 & 02M040



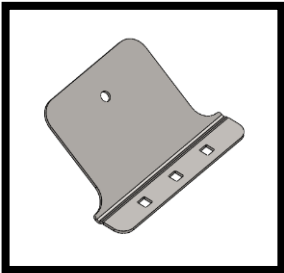
**3B** REAR TUBE / HANDLE ASSEMBLY  
P/N -M847228  
APPLICABLE TO 02M039 ONLY



**4** SPLICE TUBE  
P/N -M847214BW  
QTY (1) 02M040  
QTY (2) 02M039



**5** FRONT TUBE  
P/N -M847219BW  
QTY (1) 02M040  
QTY (2) 02M039



**6** ADAPTER PLATE  
P/N -02H851  
SET OF 4  
w/ HARDWARE

**Adapter Plate Installation for low roof full size Ford Transit  
02H851 – (4) adapter plates and hardware bag (02H876)**

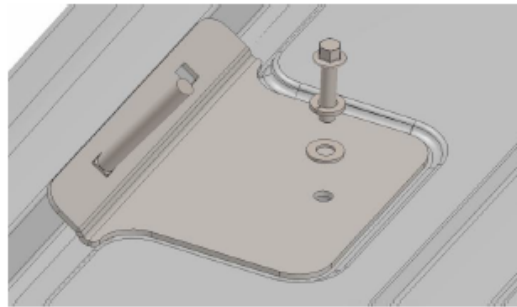
1. Adapter Plate Installation for low roof full size Ford Transit – 02H851 – (4) adapter plates and hardware bag (02H876)
2. Install the four adapter plates into the four recesses on the top of the vehicle, (Approximate distance 6" center to center).

**IMPORTANT: Pre-Install the 3" long bolts before putting adapter plates onto vehicle.**

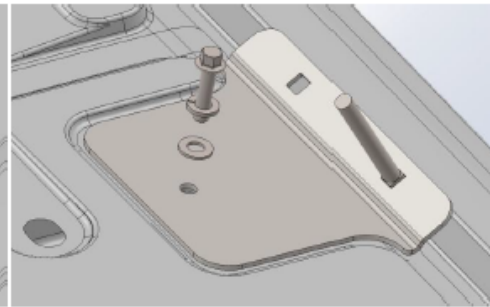
3. Use the metric (M8x35mm) hex washer head bolts, 5/16" lock washers and 5/16" washers as shown below.

**Torque Specification: for M8 bolts = 20 Nm (15 lb. ft.)**

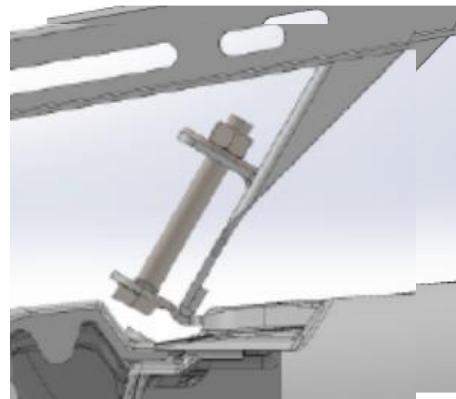
**Note: The use of Loctite Threadlocker #242, (or equivalent), is REQUIRED for the 8mm fasteners**



**Figure 9**  
Typical REAR adapter plate installation  
*Note that bolt is toward REAR of vehicle*

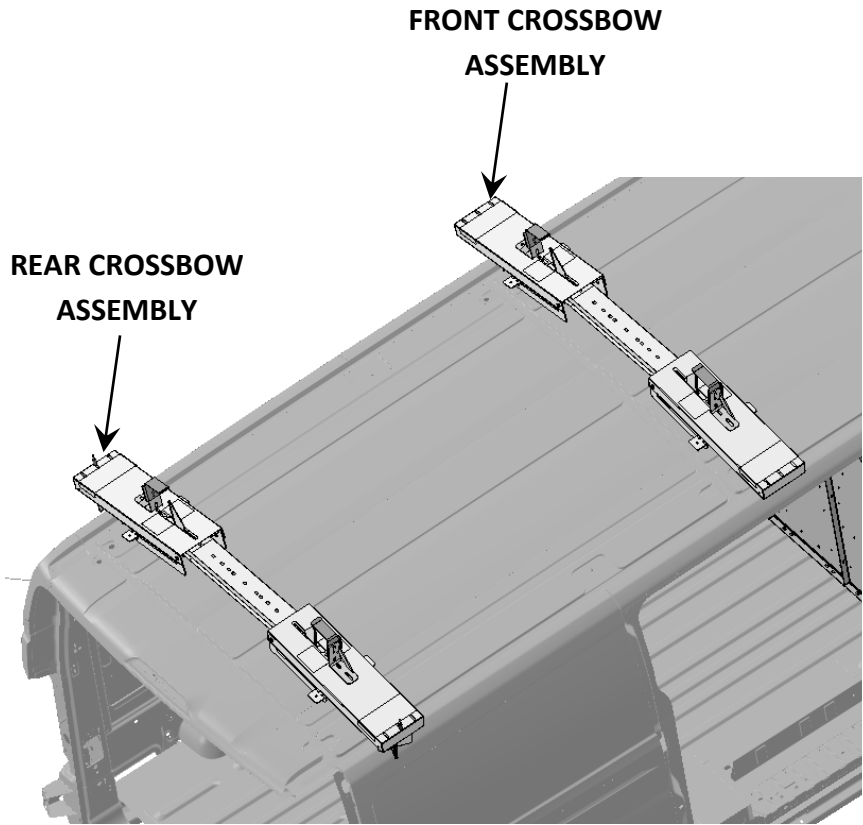


**Figure 10**  
Typical FRONT adapter plate installation  
*Note that bolt is toward FRONT of vehicle*

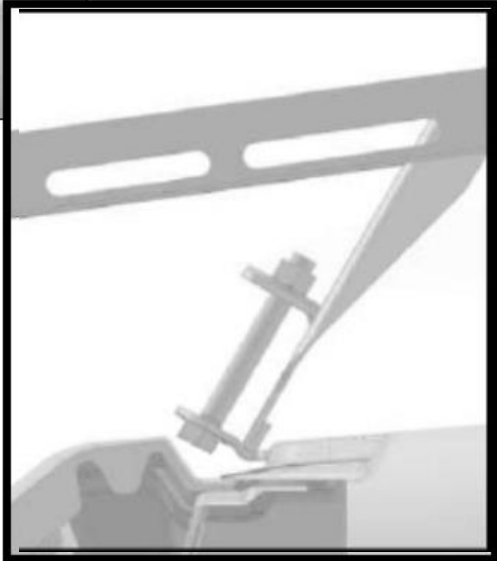
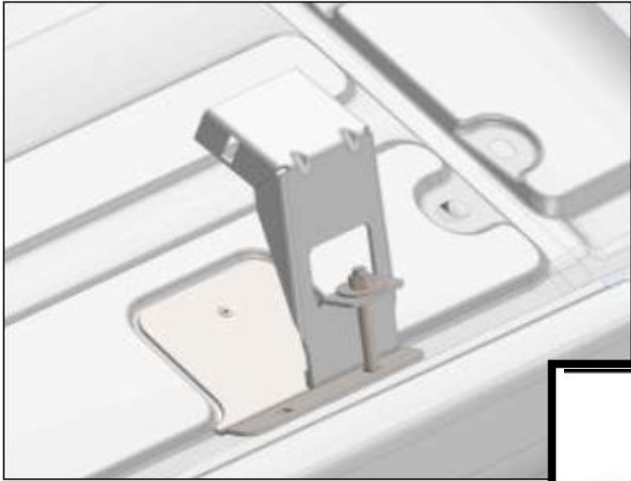


**Typical ladder rack foot to adapter plate interface.**  
**Tighten nut only to a point where tab on foot begins to bend.**  
**Over-tightening can cause damage to the foot, adapter plates and hardware; creating an unsafe condition.**

**SECURING CROSSBOWS**



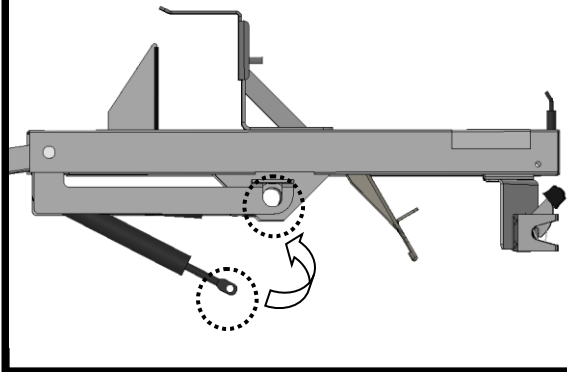
**02M039 SHOWN**



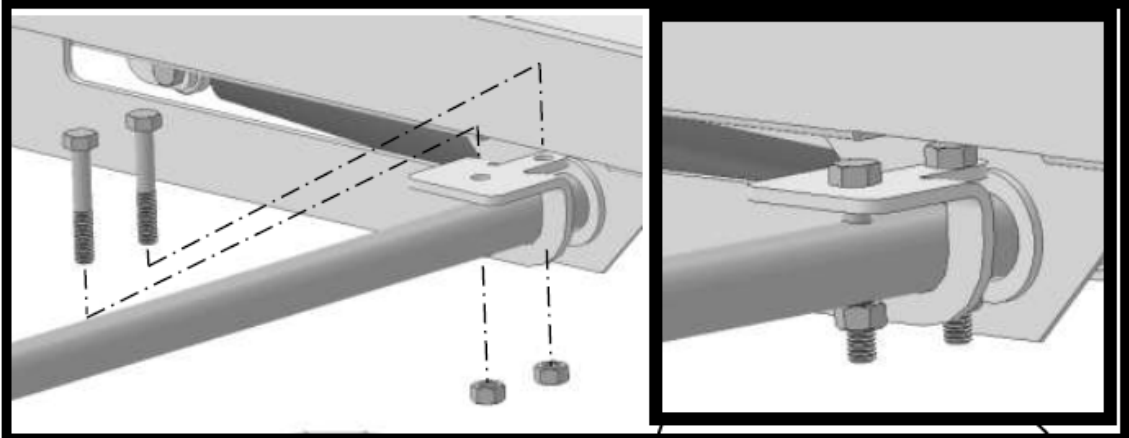
**TYPICAL LADDER RACK FOOT TO ADAPTER PLATE INTERFACE.**  
**TIGHTEN NUT ONLY TO A POINT WHERE TAB ON FOOT BEGINS TO BEND.**  
**OVER-TIGHTENING CAN CAUSE DAMAGE TO THE FOOT, ADAPTER PLATES**  
**AND HARDWARE; CREATING AN UNSAFE CONDITION.**

**ATTACHING REAR TUBE HANDLE ASSEMBLIES**

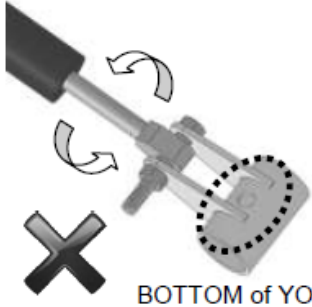
Rotate Damper Assembly upward and align holes in, LH Arm Grommet, Cylinder Link Weldment and RH Arm Grommet.



Slide **REAR TUBE HANDLE ASSEMBLY** through LH, Cylinder Link Weldment and RH Arm Grommets. At the hole locations shown, and secure with **(4) 5/16-18 x 1.5 Hex Head Screws** and **(4) 5/16-18 NyLock Nuts**. **PER TUBE**



**VERY IMPORTANT BEFORE INSERTING TUBE HANDLE MAKE SURE TOP OF YOKE IS FACING UP As Shown Below**

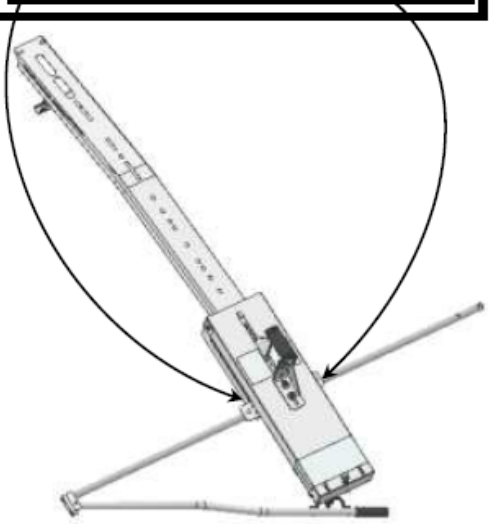
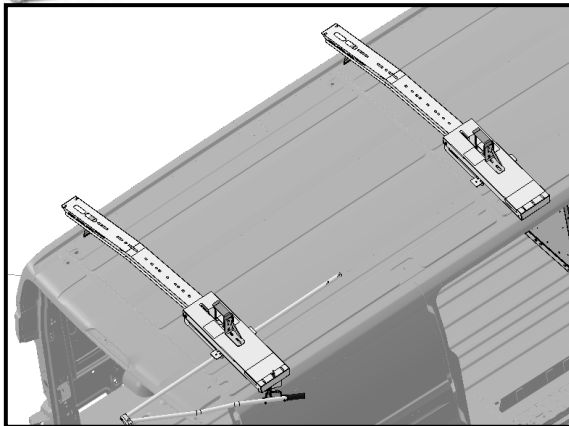
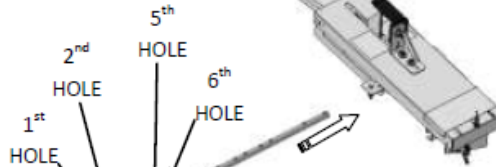


BOTTOM of YOKE

**TOP OF YOKE MUST FACING UP FOR PROPER YOKE and CYLINDER ALIGNMENT**

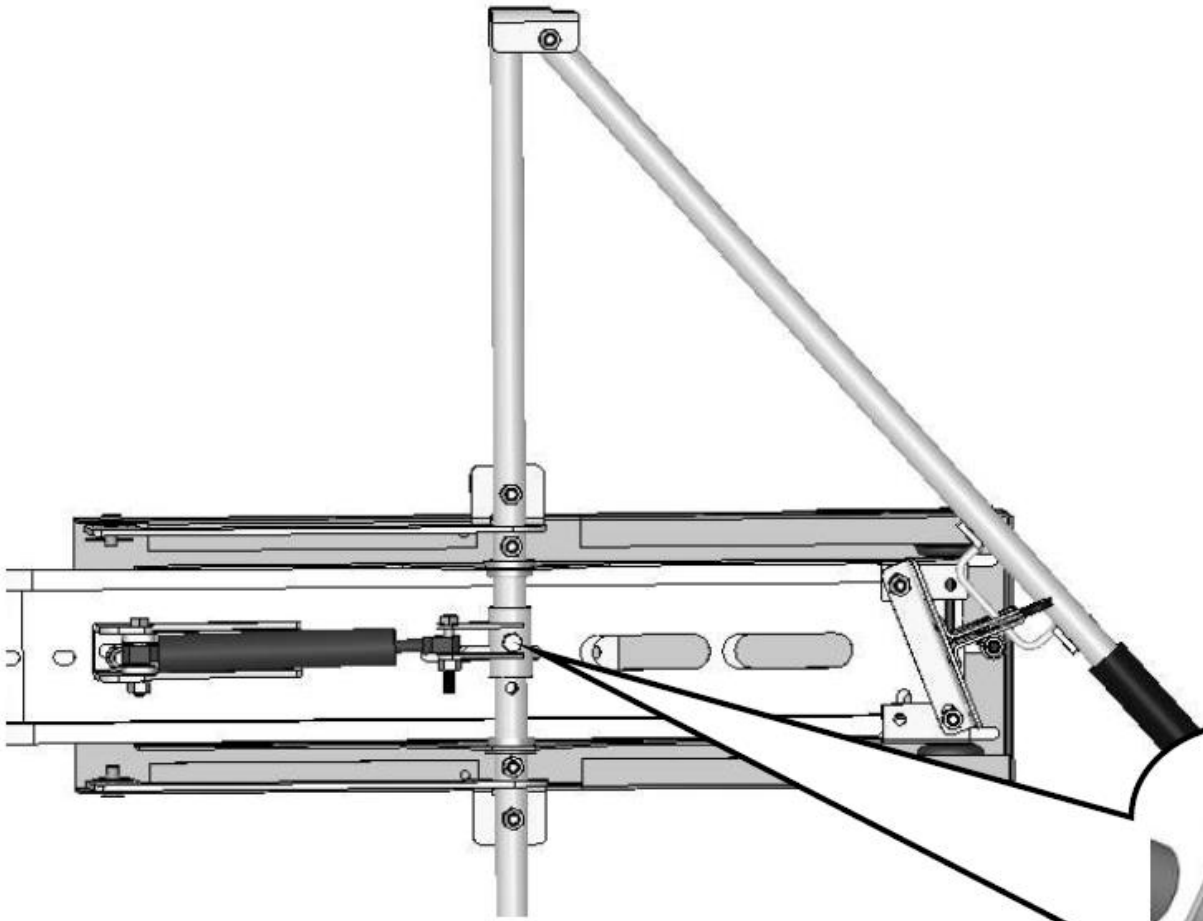


TOP of YOKE

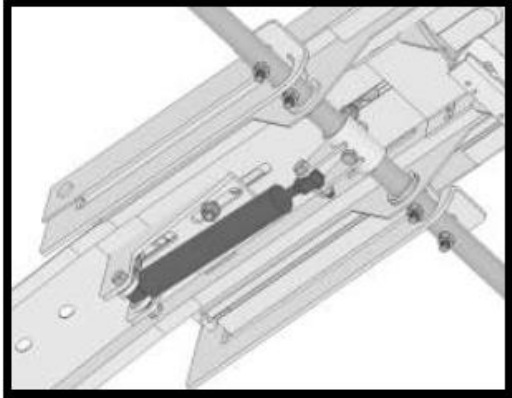


**TORQUE SETTING:**  
Size - 5/16 = 12-17 Ft.-Lbs.

**SECURING DAMPER**



**IMPORTANT**  
SEE NEXT PAGE FOR  
PROPER YOKE and CYLINDER  
ALIGNMENT



**TORQUE SETTING:**  
Size - 5/16 = 12-17 Ft.-Lbs.

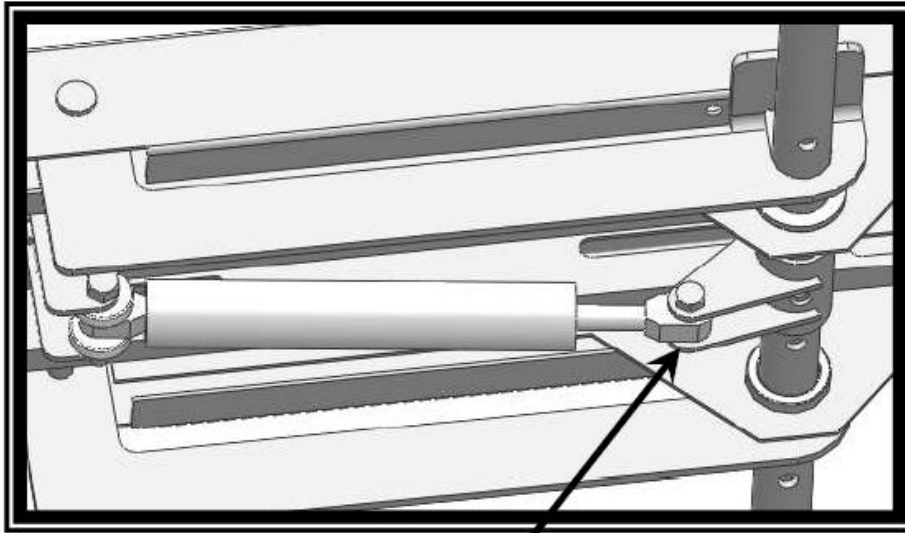
AT REAR HOLE  
CLOSEST TO  
HANDLE

Secure using;  
(1) 5/16-18 x 2 Hex Head Screw  
(1) 5/16-18 E-Stop Nut

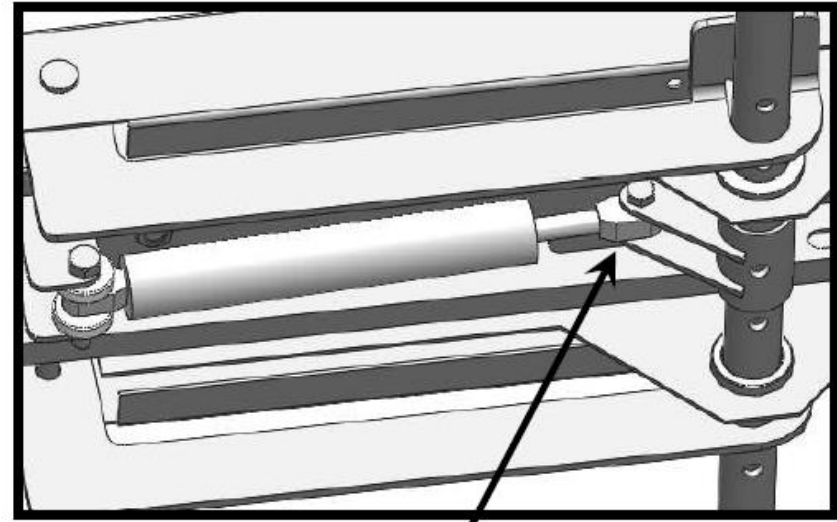
This section contains two close-up diagrams. The left diagram shows a hex head screw being inserted into a hole in the damper assembly. The right diagram shows an E-stop nut being secured onto the end of the screw. A label with an arrow points to the rear hole closest to the handle.



**INCORRECT ALIGNMENT**  
**WILL DAMAGE THE DAMPER**



**CORRECT** YOKE and DAMPER ALIGNMENT



**INCORRECT** YOKE and DAMPER ALIGNMENT

**NOTE: IN THIS EXAMPLE THE**  
**YOKE IS ATTACHED UPSIDE DOWN**

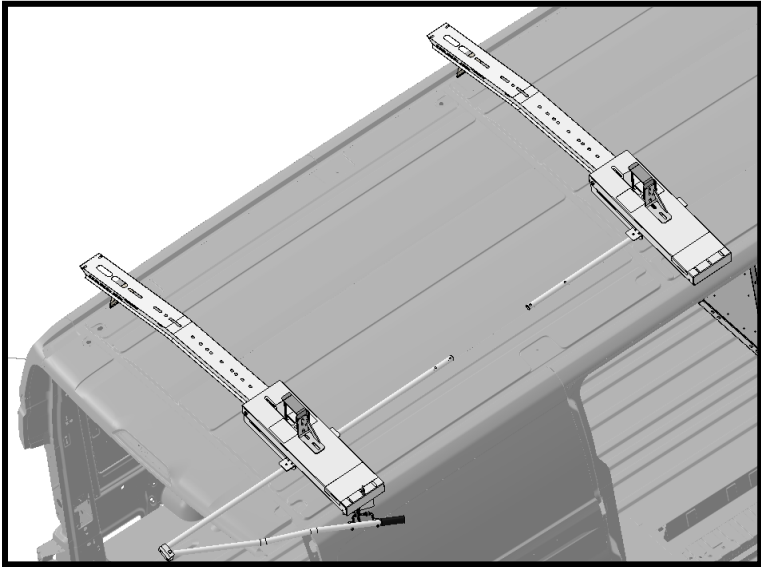




## ATTACHING FRONT TUBES

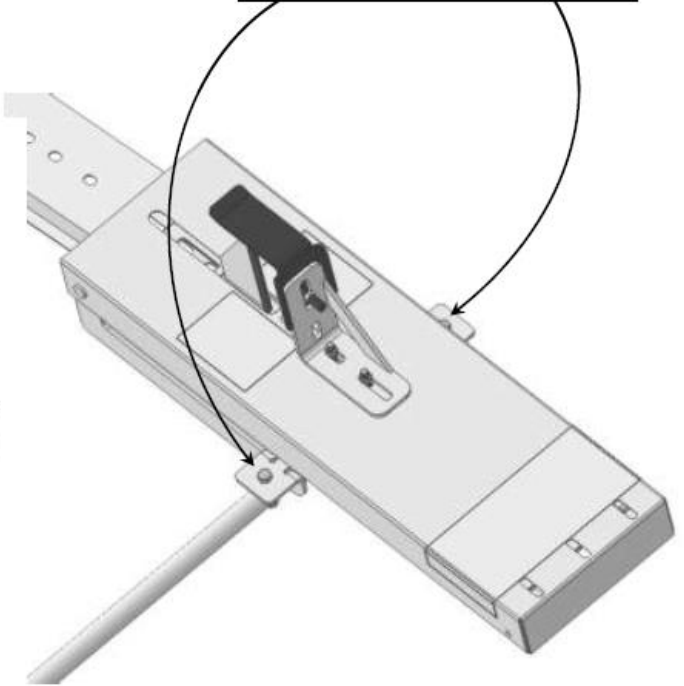
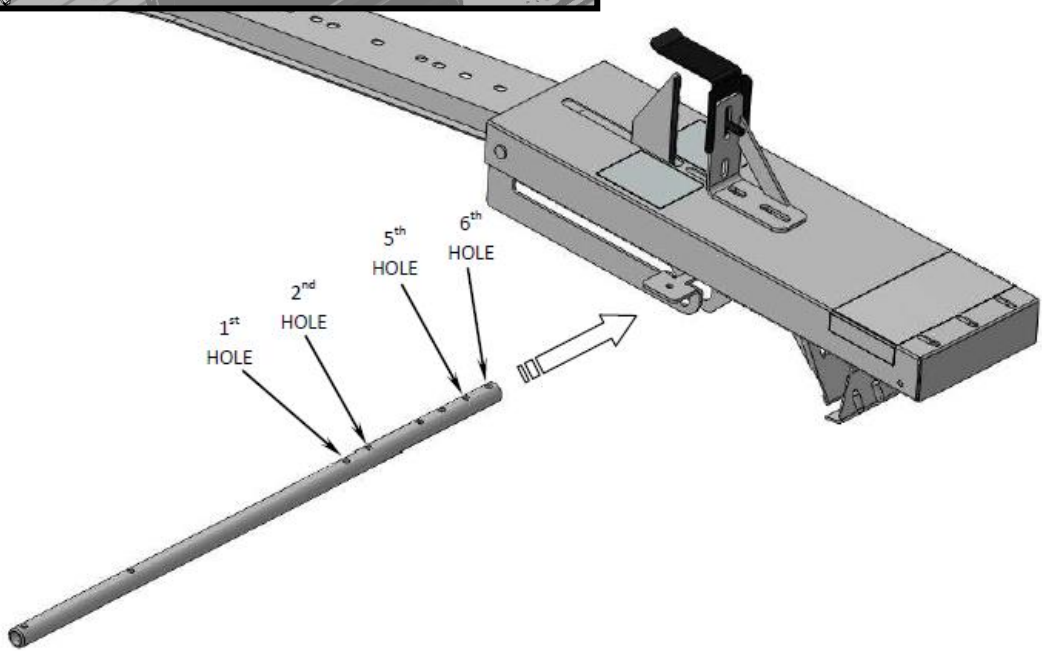
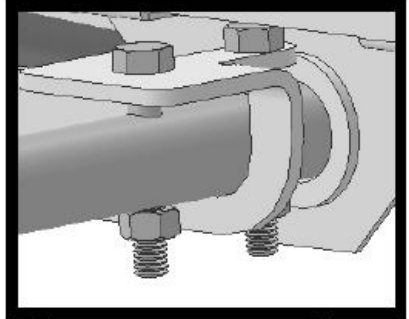


**ASSEMBLY TIP**  
**REVIEW PAGE 11 BEFORE ATTACHING FRONT TUBE**  
Slide Splice Tube onto Rear Handle Tube. before Attaching Front Tube

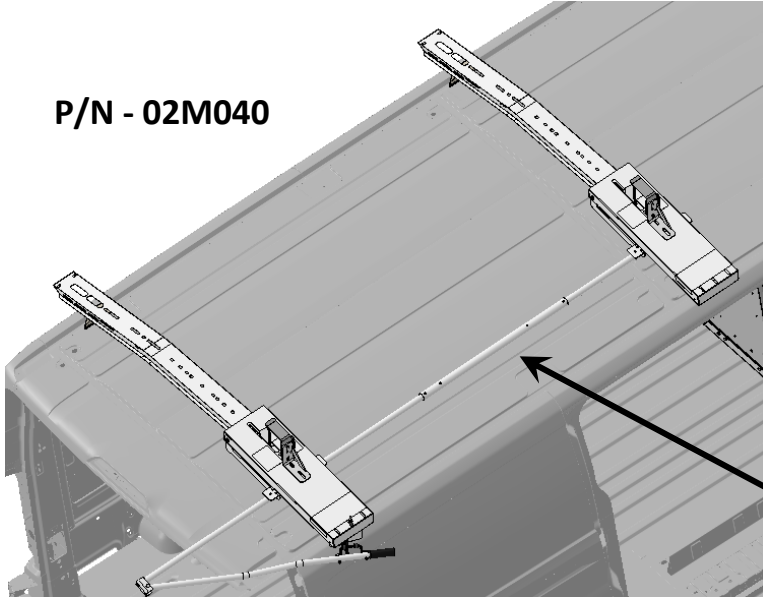


Slide **FRONT TUBE** through LH and RH Arm Grommets.  
At the hole locations shown, secure with  
**(4) 5/16-18 x 1.5 Hex Head Screws** and  
**(4) 5/16-18 NyLock Nuts PER FRONT TUBE**

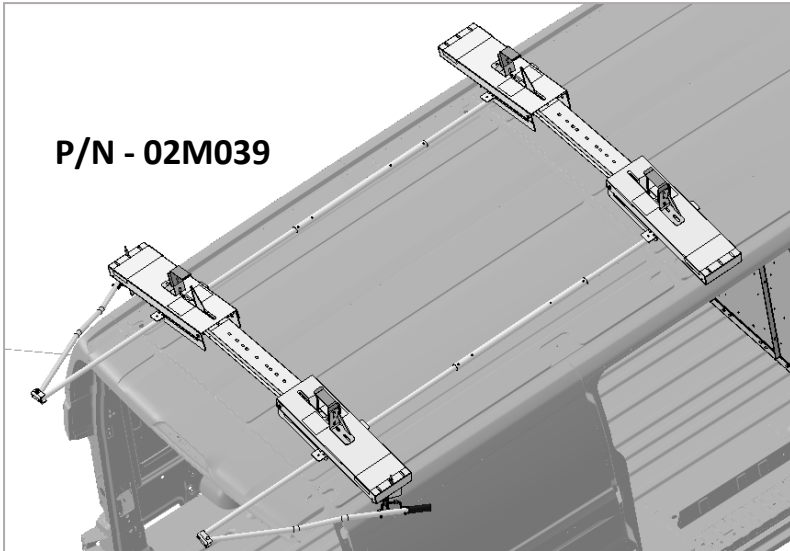
**TORQUE SETTING:**  
Size - 5/16 = 12-17 Ft.-Lbs.



**P/N - 02M040**



**P/N - 02M039**



Attach **SPLICE TUBE** by sliding **SPLICE TUBE** over **REAR TUBE**, then the **FRONT TUBE** and aligning holes as shown, and securing with (4) 5/16-18 x 1.75 Hex Head Screws and (4) 5/16-18 NyLock Nuts. **PER SPLICE TUBE**

**TORQUE SETTING:**  
Size - 5/16 = 12-17 Ft.-Lbs.

**SLIDE DOWN LADDER RACK ADJUSTMENT**

**THE ADJUSTMENT SHOULD BE ACCOMPLISHED WITH THE ACTUAL LADDER YOU WILL BE CARRYING OR AN IDENTICAL MODEL. THE ADJUSTMENT PROCEDURE SHOULD BE REPEATED WHEN A DIFFERENT LADDER IS USED.**

- 1. MOVE THE SLIDE DOWN LADDER CHANNELS SO THEY ARE RESTING OVER VEHICLE SIDE.**
- 2. MOVE THE ANGLE STOPS TO THE MAXIMUM OUTBOARD POSITION.**
- 3. LOAD LADDER ON THE CHANNELS BY RESTING IT ON THE FRONT AND REAR ANGLE STOPS. YOUR LADDER SHOULD NOT EXCEED VEHICLE BUMPER LINES.**
- 4. MOVE LADDER TO THE TOP OF YOUR VEHICLE BY ROTATING THE HANDLE DOWN AND THEN UPWARD.**
- 5. ENGAGE HANDLE INTO LATCH.**
- 6. ADJUST AND TIGHTEN PAD ASSEMBLY STOP/VINYL. CLEARANCE BETWEEN TOP OF LADDER SIDE AND PAD SHOULD BE 1/4" ON THE REAR AND 1/2" ON THE FRONT.**
- 7. SLIDE LADDER TO CONTACT CHANNEL BLADES.**
- 8. SLIDE AND TIGHTEN FRONT AND REAR ANGLE STOPS TO THE LADDER SIDE RAILS.**

**NOTE: FINAL ADJUSTMENT FOR THE SECURITY HOLD DOWN SHOULD LEAVE APPROXIMATELY A 1/16" – 1/18" GAP ON THE SIDE OF THE LADDER AND A 1/4" – 3/8" GAP ON THE TOP.**

## 3 Year / 36,000 Mile Limited Warranty

MASTERACK® commercial van and pickup equipment is warranted to be from defects in material and workmanship, under normal use and service for a period of one (1) year from date of purchase. Factory installations, and products installed in new vehicles by an authorized MASTERACK® installer are warranted for **(3) years or 36,000 miles (60,000 KM)**, whichever comes first. **This warranty covers only repairs, or at MASTERACKS' discretion, replacement to correct any defects related to materials and workmanship.**

### This warranty does not apply to:

- Additions, alterations, or installations made by persons including dealers, other than MASTERACK® and its authorized distributors, made in accordance with MASTERACK® specifications and / or instructions, nor to defects arising out of attribute to such additions, alterations or installations.
- Defects attributable to abuse or misuse of the product, misapplication, negligent accident, modification or tampering.
- Damage resulting from failure to promptly notify and comply with the instructions of the dealer or manufacturer about defects when noted.
- Any incidental or consequential damages connected with a defect, either while under warranty or afterward, including the cost of a rental truck and / or loss or revenue.

**THE WARRANTY IS THE ONLY WARRANTY APPLICABLE TO A MASTERACK PRODUCT PURCHASE. ALL OTHER WARRANTIES, EXPRESSED OR IMPLIED, INCLUDING BUT NOT LIMITED TO, THE IMPLIED WARRANTIES OR MERCHANTABILITY AND FITNESS FOR A PARTICULAR PURPOSE ARE DISCLAIMED. MASTERACK® AND ITS SUBSIDIARIES, SHALL NOT BE LIABLE FOR ANY INCIDENTAL OR CONSEQUENTIAL DAMAGES ARISING OUT OF ANY BREACH OF THIS WARRANTY, NOR SHALL THE DAMAGES EXCEED THE RETURN AMOUNT OF THE PURCHASE PRICE PAID BY THE ORIGINAL PURCHASER.**

Warranty claims must be submitted to either your sales representative or a customer service representative at **1-800-222-8785**. The vehicle must be delivered to the original MASTERACK® authorized dealer for inspection and any warranty service. Any warranty service to be performed by a source other than MASTERACK® location or an approved MASTERACK® distributor must be authorized in advance of the repairs by the MASTERACK® Warranty Administrator and a purchase order issued by MASTERACK® in advance or repairs for the authorized repairs.